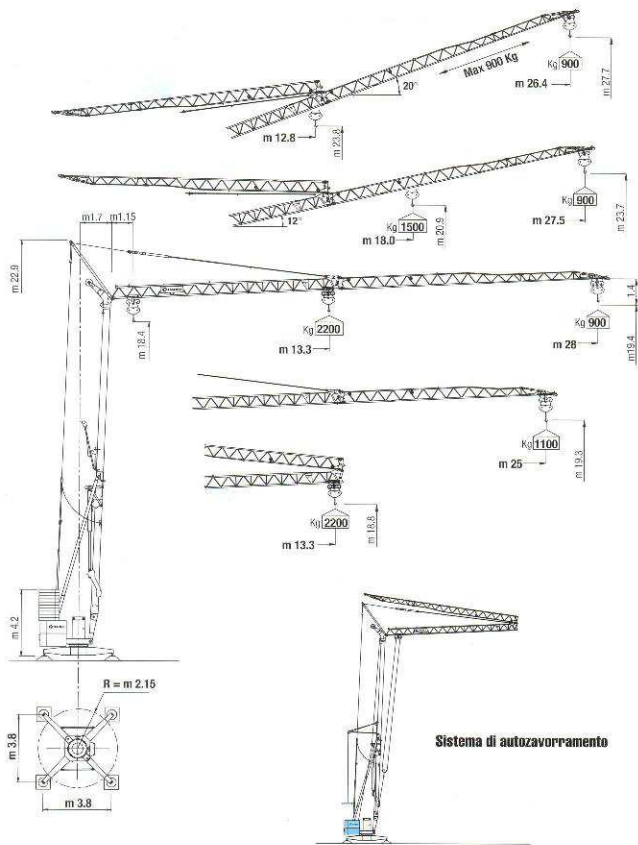


CM 78A








Sistema di autoavroramento

Curve di carico	kg	2200	2000	1800	1600	1500	1400	1200	1100	1000	900
Load diagrams	m	13.3	14.4	15.8	17.4	18.3	19.4	22.1	23.7	25.7	28.0
Curbes de charge	m	14.0	15.2	16.6	18.3	19.3	20.4	23.2	25.0		
Lastkurven	m					18.0	19.0	21.6	23.2	25.1	27.5
Curvas de cargas	m										

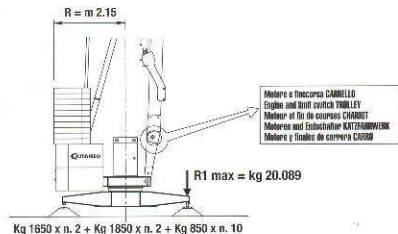


Courtesy of Crane.Market

CM 78A

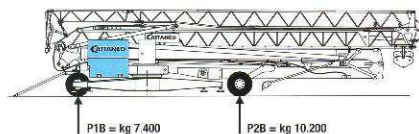
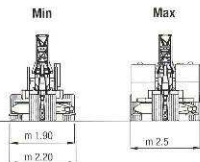
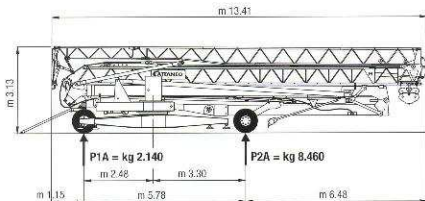
			1°	2°	3°	CV	kW
 Calzamento Hoisting Levage Hubwerk Elevación		m/1'	5	21	42	9	6,6
		kg	2200	2200	1000		
 Carro/a - Trolley Charriot - Kistelfahrwerk Carro		m/1'		23 - 46		1,75	1,3
 Rotazione - Steering Orientation - Drehwerk Rotación		g/1'		0 → 0,4 → 0,9		3	2,2
 Potenza elettrica necessaria Necessary electric power Potencia eléctrica necesaria Auschliesswert Potencia eléctrica necesaria		kVA		14		400 V-50Hz	

Contropeso in lastre di cemento armato - Ferro-concrete ballast slabs
 Contrepoids en plaques de béton armé - Gegenballast aus Stahlbetonplatten - Lastre en hormigón armado



Massa gru (con assale da cantiere) Weight of crane (with yard axle) Poids de la grue (avec essieu de chantier) Konstruktionsgewicht des Kranes (mit Baugartelwerk) Pesa grúa (con eje para obra)	kg 10.600
Massa contropeso Counterweight Contrepoids Gegengewicht Contrapeso	kg 15.500

Transporto - Transport - Transport - Transport - Transporte



P tot. kg	
A	10.600
B	17.600

Courtesy of Crane.Market

Specifici dati vanno senza garanzia. Specifici dati si applicano alle macchine. Specifici dati si applicano alle macchine. Specifici dati si applicano alle macchine. Specifici dati si applicano alle macchine. Specifici dati si applicano alle macchine.

CM 78A

MONTAGGIO

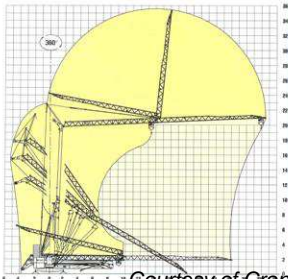
- Meccanismo di montaggio oleodinamico automatizzato, con cilindri indipendenti per torre e braccio, comandabili a distanza tramite pulsantiera o telecomando; allineamento aereo del braccio brevettato, con cilindri indipendenti in posizione provata e stelo rientrato in condizione di esercizio - Presterminazione delle funi di trazione a terra e mantenimento della tensione costante per tutto il montaggio - Apertura e chiusura automatica del puntone del braccio durante il montaggio e lo smontaggio - Valvole di blocco su tutti i movimenti dei cilindri e valvola limitatrice di pressione - Microinterruttore di livello olio in centralina - Tuta oleata senza giunzioni infamde, con protezioni su tutto il perimetro.
- La facilità di abbassare la gru con il braccio sollevato consente una facile e rapida verifica ed un eventuale intervento sui carrelli, sui carofissi delle funi e sulle pulegge, senza dover smontare completamente la gru.
- L'accesso, il posizionamento e l'uscita dai cantieri sono agevolati dalla facilità di montare e smontare la gru su 360°, con ingombri minimi; le operazioni di avvolgimento e di installazione degli assali sono rese rapide e facili con la semplice azione del cilindro di montaggio. Gli spostamenti sono facilitati dal carro guidato a quattro ruote di grande diametro, dalla possibilità di riportarsi tutto il contrappeso di montaggio e di restringere la carreggiata dell'asse fuso.

Brevettata

Assembling

Positioning and leveling on 360° - Easy moving with great wheels in diameter - Assembling in few minutes in narrow places - Automated oleodynamic assembling with aerial opening of the job - Remote-controlled independent movements of assembling - Safety valves on the whole system - Microswitch of level in the gearbox - Minimum encumbrance - Low rotation radius

Patented



Simple to use
High performances
Rugged construction
Planned for important works

- No electrical component on the job and on the high parts of the crane. Low mechanism and limit switch of trolley translation with automatic feedback of the translation ropes during the assembling.
- Engines, limit switches, load limiting devices, whole electric system, gauge and oleodynamic gearbox are placed on the base of the crane for an easy maintenance and adjustment on ground.
- Hoisting winch, oleodynamic gearbox and slewing devices protected under integral case, slewing ring with internal protected toothing.
- Transport on lorry within the loading gauge

Mechanisms and equipment

- Galvanization of the tower and the job
- Folding job with working crane
- Lifting job with climbing trolley
- Modular job
- Hoisting with 3 temporized speeds
- Crab traversing with 2 speeds, with gradual starting
- Electronic control of rotation with "inverter" and countermeasure control
- Cutting out of the electronic hoisting control in case of trouble
- Overload warning horn
- Complete equipment of limit switches and limiters
- Temporized load limiters for the extinction of oscillations
- Double controlled contactors for the "up" and "far" motion
- Protected engines with magnetothermic switches
- "Télémeccanique" contactors
- Galvanized ropes
- Stainless steel cabinet of electrical equipment
- Cabinet for equipment and pushbutton board
- Yard axle with 4 wheels
- Assembling and finishing ballast
- Immersion painting with undercoat

Optional equipments

- Distribution plates for bearing on ground
- Selfballasting demick
- Radio control with pushbutton

Courtesy of CraneMarket