















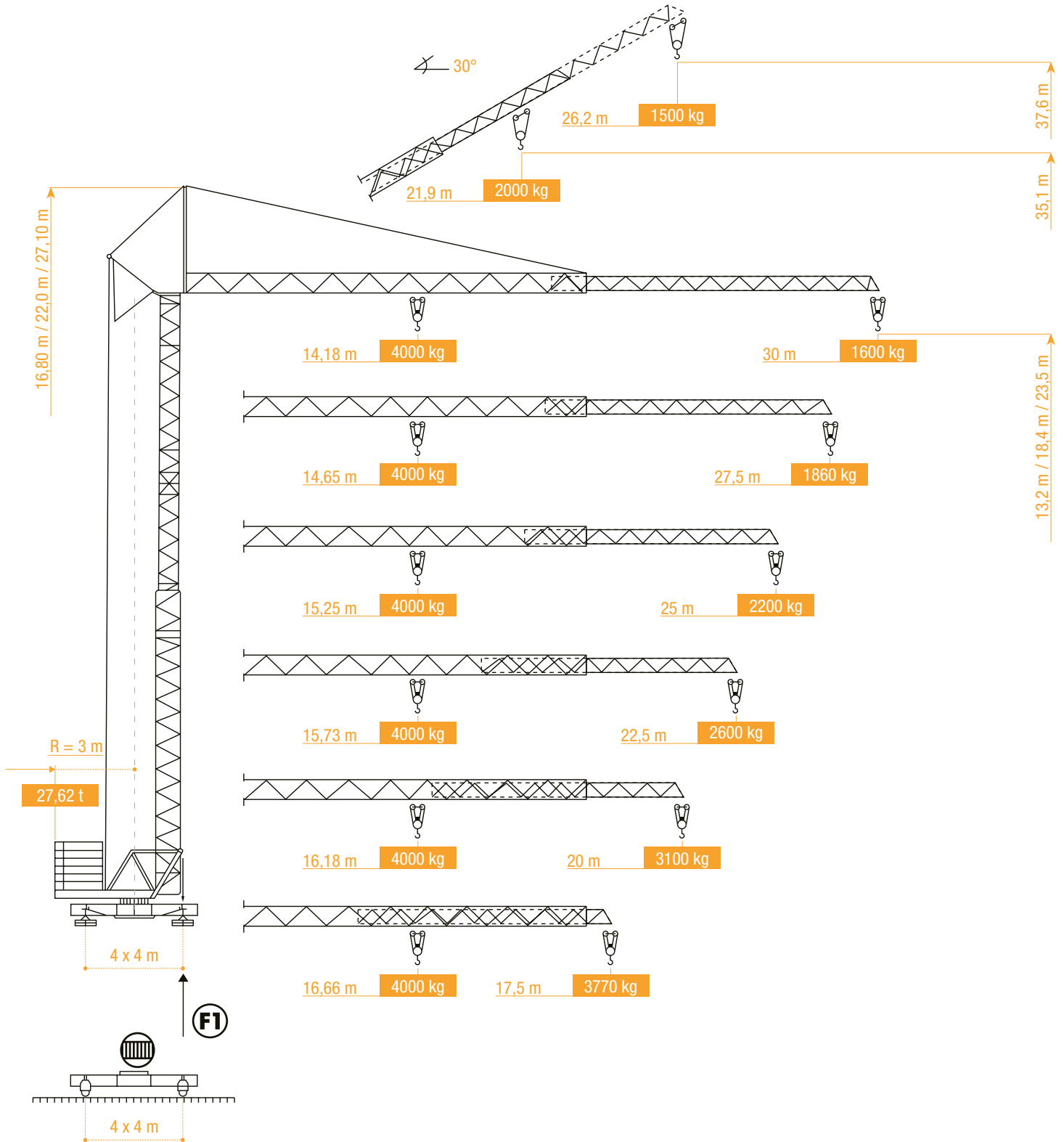
 <ul style="list-style-type: none"> •in bedrijf •en service •in service •in Betrieb •in servizio •en servicio 	 <ul style="list-style-type: none"> •buiten bedrijf •hors service •out of service •außer Betrieb •fuori servizio •fuera de servicio 	 <ul style="list-style-type: none"> •hijsen •levage •hoisting •heben •sollevamento •elevación 	 <ul style="list-style-type: none"> •loopkatrijden •chariotage •jib trolleying •Katzfahren •traslazione carrello •poleas móviles 	 <ul style="list-style-type: none"> •zwenken •orientation •slewing •Schwenken •rotazione •orientación 	 <ul style="list-style-type: none"> •spanning •tension •voltage •spannung •tensione •tensión 	 <ul style="list-style-type: none"> •gewicht zonder ballast •poids propre sans lest •weight without ballast •gewicht ohne Ballast •peso senza zavorra •peso sin lastre
 <ul style="list-style-type: none"> •lengte •longueur •length •länge •lunghezza •longitud 	 <ul style="list-style-type: none"> •spoor •translation •rail •Kranfahren •carreggiata •rail 	 <ul style="list-style-type: none"> •vermogen •puissance •power •leistung •potenza •potencia 	 <ul style="list-style-type: none"> •micro snelheid •vitesse •speed •Geschwindigkeit •velocità •velocidad 	 <ul style="list-style-type: none"> •2^o snelheid •2^e vitesse •2^o speed •2^o Geschwindigkeit •2^a velocità •2^o velocidad 	 <ul style="list-style-type: none"> •3^o snelheid •3^e vitesse •3^o speed •3^o Geschwindigkeit •3^a velocità •3^o velocidad 	 <ul style="list-style-type: none"> •maximale hoekdruk •réactions •reactions •Eckdrücke : 10 kN = 1t •press. angolare massima •presión angular máxima
 <ul style="list-style-type: none"> •enkel inschering zonder hijsblok •simple mouflage sans moufle •2 fall reeving without houstingblock •2 Fach Einscherung ohne Hakenflasche •passaggio semplice senza paranca •solamente elevación sin polea 	 <ul style="list-style-type: none"> •enkel inschering met hijsblok •simple mouflage avec moufle •2 fall reeving with houstingblock •2 Fach Einscherung mit Hakenflasche •passaggio semplice con paranca •solamente elevación con polea 	 <ul style="list-style-type: none"> •dubbel inschering •double mouflage •4 fall reeving •4 Fach Einscherung •passaggio doppio •elevación doble 				

Konform richtlijn 2000/14/EG betreffende geluidsemissie van materieel voor gebruik buitenshuis en wijzigingen. - également conforme aux dispositions de la directive "émission sonores des équipements utilisés à l'extérieur des bâtiments" 2000/14/CE et aux législations la transposant. - Requirements of directive 2000/14/CE "noise emission in the environment by equipment for use outdoors, as amended. - Bestimmung der Richtlinie "Lärmübertragung des ausserhalb der Gebäude benutzten Ausrüstungen" 2000/14/EG und den gesetzlichen Vorschriften.



ARCOMET

Industrieweg 139 - 3583 Paal-Beringen - BELGIUM - T +32 (0)11 450 950 - EMAIL arcomet@arcomet.com - www.arcomet.com



Voor "version CITY", contacteer ons. Pour "version CITY", consultez nous. For "version CITY", contact us. Für "version CITY", kontaktieren Sie uns.



ARCOMET

www.arcomet.com



LASTENTABEL - COURBES DE CHARGES - LOAD CURVES - LASTKURVEN - CURVE DI CARICO - CURVAS DE CARGAS

m	14,18	15	16	17	18	19	20	21	22	23	24	25	26	27	28	29	30
kg	4000	3735	3451	3206	2990	2800	2631	2479	2343	2219	2107	2004	1910	1823	1743	1669	1600

m	14,65	15	16	17	18	19	20	21	22	23	24	25	26	27,5
kg	4000	3886	3592	3337	3114	2916	2741	2583	2442	2313	2197	2090	1992	1860

m	15,25	16	17	18	19	20	21	22	23	24	25
kg	4000	3772	3505	3271	3065	2881	2716	2568	2434	2312	2200

m	15,73	16	17	18	19	20	21	22	22,5
kg	4000	3919	3643	3400	3186	2996	2825	2671	2600

m	16,18	17	18	19	20
kg	4000	3768	3518	3297	3100

m	16,66	17,5
kg	4000	3770



m	26,11	27	28	29	30
kg	2000	1923	1843	1769	1700

HOEKDRUKKEN - RÉACTIONS - REACTIONS - ECKDRÜCKE - REAZIONI - REACCIONES

F1

kN	247
----	-----

F1

kN	175
----	-----

kg

kg	13 800
----	--------

AANDRIJVINGEN - MÉCHANISMES - MECHANISMS - ANTRIEBE - MECCANISMI - MECANISMOS



max. 2000 kg



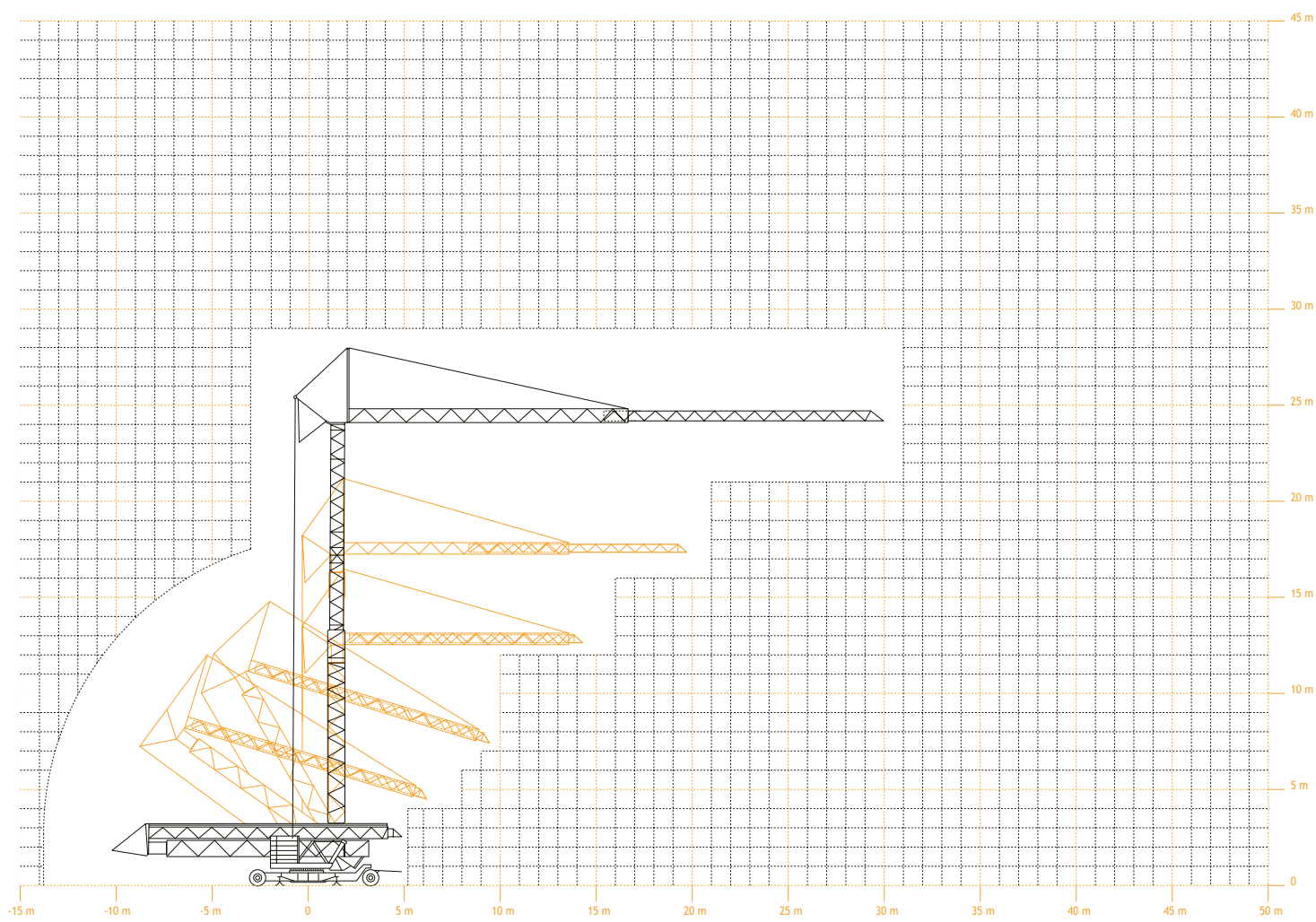
max. 4000 kg

	m/min	0 → 22	0 → 26	0 → 44	0 → 11	0 → 13	0 → 22
	kg	2000	1500	1000	4000	3000	2000
	kW	11,0	11,0	11,0	11,0	11,0	11,0
	m/min	0 → 60		1,5 kW	0 → 60		1,5 kW
	tr/min	0 - 1		2,2 kW	0 - 1		2,2 kW
kVA	max	25 kVA			35 kVA		
		400 V / 50 Hz / 32 A					

Opm: mogelijkheid tot werken met gereduceerde snelheid bij 25A
Rem: commande sous 25A possible a vitesse reduite

Note: operation with 25A only possible at reduced speed
Bem: Bedienung mit 25A nur mit reduzierter Geschwindigkeit

VEREISTE MONTAGERUIMTE - ENCOMBREMENT AU MONTAGE - SPACE REQUIREMENT - ABMESSUNGEN - SPAZIO NECESSARIO PER IL MONTAGGIO



TRANSPORT

