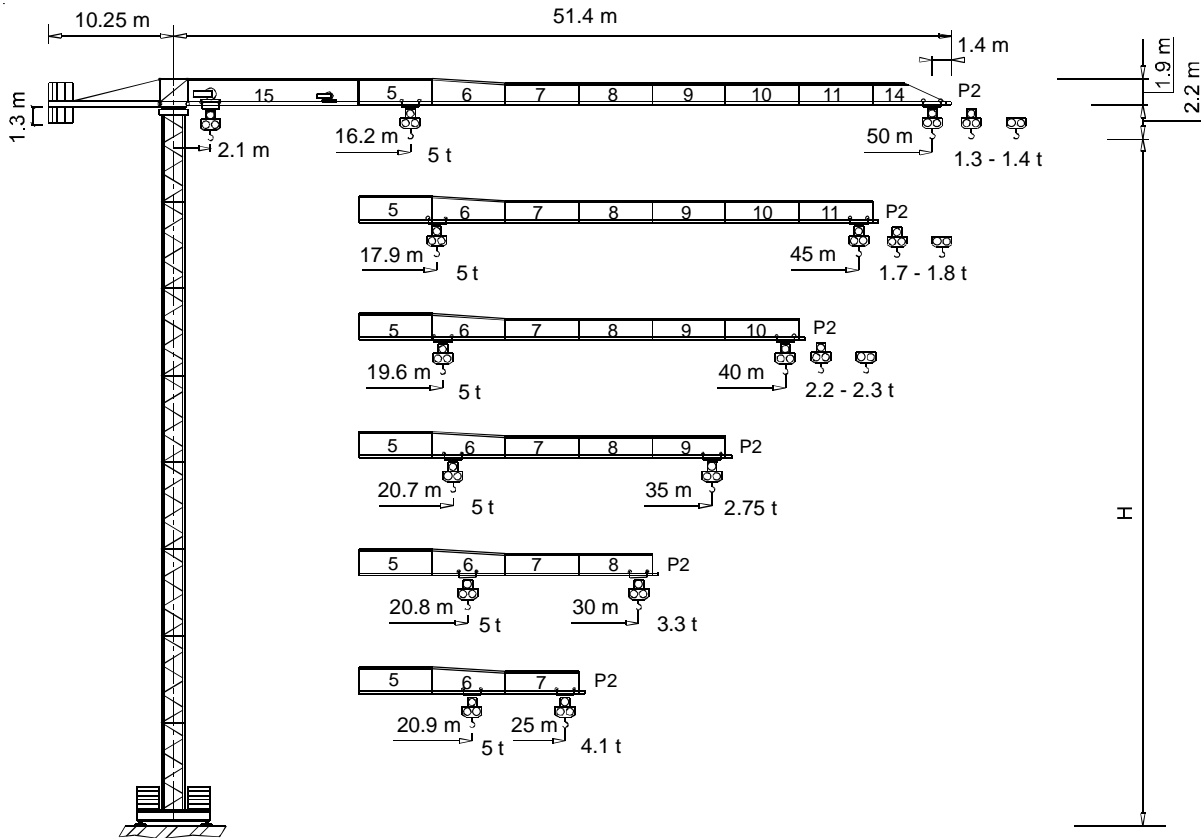




TEREX | COMEDIL

Gru a torre "Flat Top"

**"Flat Top" Tower Crane • Grue à tour "Flat Top"
"Flat Top" Turmdrehkran • Grúa torre "Flat Top"**



CE FEM 1.001 A3

THE ULTIMATE CRANE™

Dati illustrativi non impegnativi
Con riserva di modifica senza preavviso

Specifications and data not binding
Subject to modification without notice

Données techniques seulement indicatives
Modifications réservées sans préavis

Angaben und Beschreibung unverbindlich
Änderungen vorbehalten ohne weitere Mitteilung

Dibujos y datos sin compromiso
Modificaciones reservadas sin preaviso

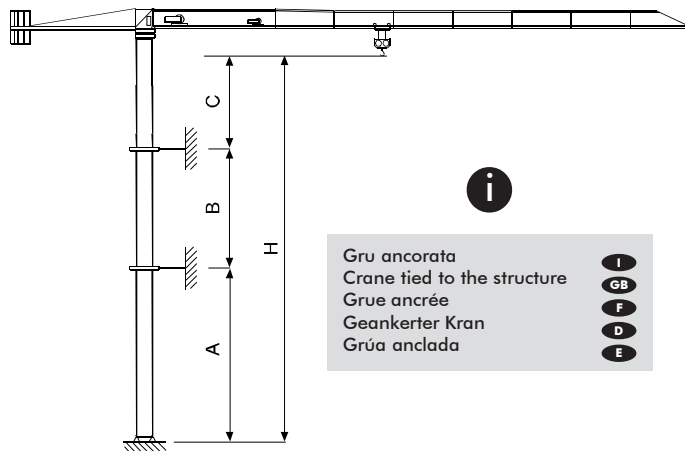
UTE.DOC. REV.003

"CITY" CTT 91-5 TS12

Diagramma di portata **I**
Load Diagram **GB**
Courbes de charges **F**
Lastkurven **D**
Curvas de cargas **E**

i		CTT 91-5													
						5	10	15	20	25	30	35	40	45	50
2.5 t	- 30.63 m	t	2.5	2.5	2.5	2.5	2.5	2.5	2.5	2.5	2.14	1.83	1.59	1.4	
2.5 t	- 29.53 m	t	2.5	2.5	2.5	2.5	2.5	2.5	2.5	2.45	2.04	1.73	1.49	1.3	
5 t	- 16.16 m	t	5	5	5	3.93	3.04	2.45	2.04	1.73	1.49	1.49	1.3		
2.5 t	- 33.93 m	t	2.5	2.5	2.5	2.5	2.5	2.5	2.5	2.41	2.07	1.8			
2.5 t	- 32.74 m	t	2.5	2.5	2.5	2.5	2.5	2.5	2.5	2.31	1.97	1.7			
5 t	- 17.88 m	t	5	5	5	4.41	3.42	2.77	2.31	1.97	1.7				
2.5 t	- 37.19 m	t	2.5	2.5	2.5	2.5	2.5	2.5	2.5	2.5	2.3				
2.5 t	- 35.92 m	t	2.5	2.5	2.5	2.5	2.5	2.5	2.5	2.5	2.5	2.2			
5 t	- 19.58 m	t	5	5	5	4.88	3.8	3.08	2.58	2.2					
2.5 t	- 35 m	t	2.5	2.5	2.5	2.5	2.5	2.5	2.5	2.5	2.5				
5 t	- 20.68 m	t	5	5	5	5	4.04	3.29	2.75						
2.5 t	- 30 m	t	2.5	2.5	2.5	2.5	2.5	2.5	2.5	2.5					
5 t	- 20.76 m	t	5	5	5	5	4.06	3.3							
2.5 t	- 25 m	t	2.5	2.5	2.5	2.5	2.5	2.5							
5 t	- 20.94 m	t	5	5	5	5	4.1								

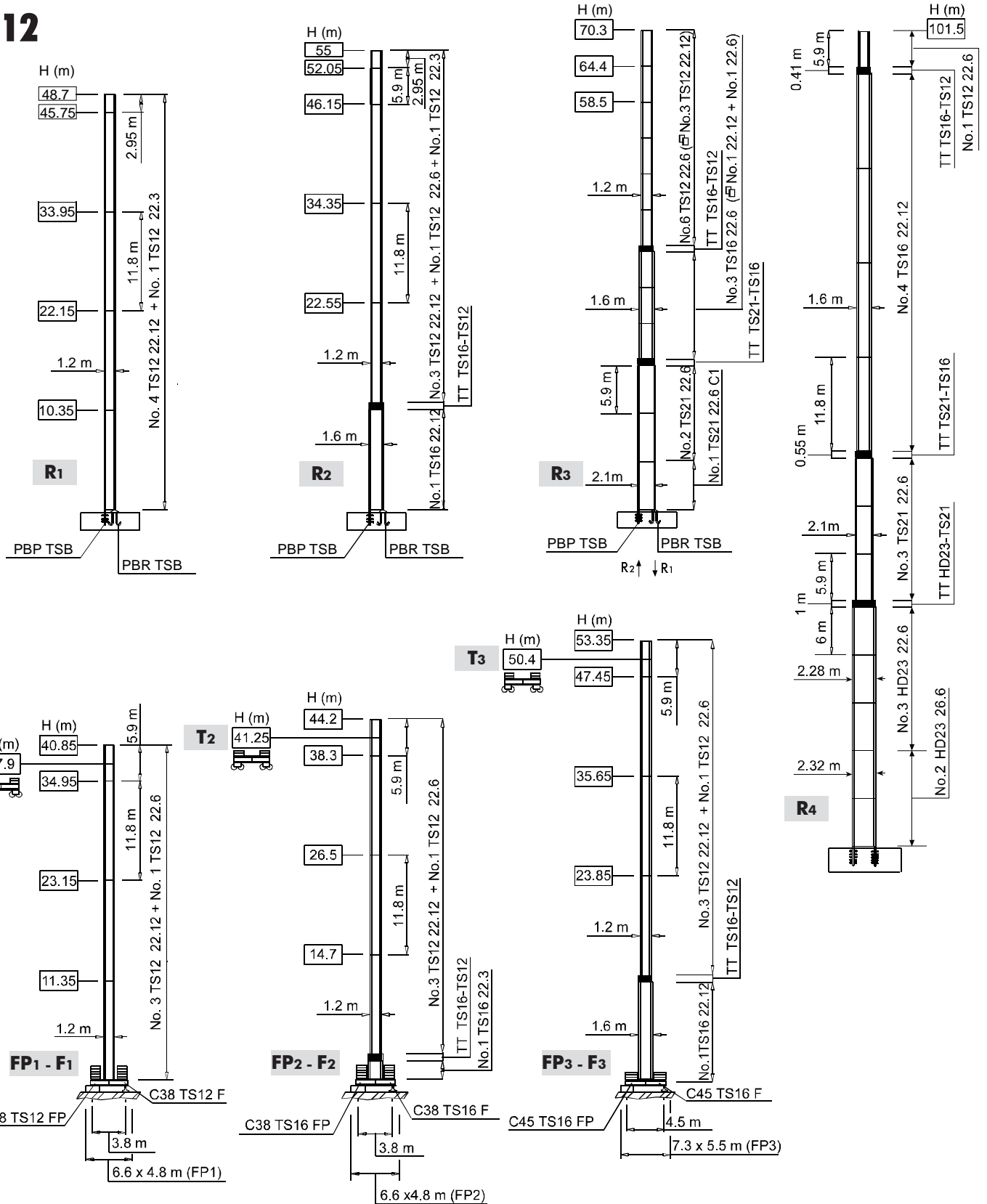
Altre installazioni **I**
Other configurations **GB**
Autres implantations **F**
Aufstellmöglichkeiten **D**
Otras implantaciones **E**



Torre **I** Tower **GB** Tour **F** Turm **D** Torre **E**

- I** Le prolunghe TS sono disponibili in lunghezze 11.8 m, 5.9 m, 2.95 m.
- F** Les éléments de mât TS sont disponibles en longueur 11.8 m, 5.9 m, 2.95 m.
- E** Los tramos de torre TS son disponibles en las medidas de largo 11.8 m, 5.9 m, 2.95 m.
- GB** The available lengths for the TS tower sections are 11.8 m, 5.9 m, 2.95 m.
- D** Die Turmschüsse TS sind mit Längen 11.8 m, 5.9 m, 2.95 m verfügbar.

TS12



H Altezza massima sotto gancho I Max. under hook height GB Hauteur maxi. sous crochet F Höchste Hackenhöhe D Maxima altura bajo gancho E

	11 APC 25	31 * kVA	400 V - 50 Hz
	15 AFC 25	40 * kVA	400 V - 50 Hz / 460 V - 60 Hz
	18 AFC 25	41 * kVA	
			2000/14/CE

* Gru senza traslazione / Crane without travelling equipment / Grue sans translation / Krane ohne Schienenfahren / Grúa sin traslación

		m/min	t	kW	
11 APC 25		6	2.5	11	186 m
		20	2.5		
		40	1.25		
		3	5		
		10	5		
		20	2.5		
15 AFC 25 (VARIANT)		0 ⇒ 1.7	2.5	15	186 m
		1.7 ⇒ 6	2.5		
		6 ⇒ 28	2.5		
		28 ⇒ 46	1.44		
		46 ⇒ 57	1.1		
		0 ⇒ 0.85	5		
		0.85 ⇒ 3	5		
		3 ⇒ 14	5		
		14 ⇒ 23	2.88		
		23 ⇒ 28.5	2.2		
18 AFC 25 (VARIANT)		0 ⇒ 2.2	2.5	18	310 m
		2.2 ⇒ 8	2.5		
		8 ⇒ 34	2.5		
		34 ⇒ 55	1.46		
		55 ⇒ 69	1.1		
		0 ⇒ 1.1	5		
		1.1 ⇒ 4	5		
		4 ⇒ 17	5		
		17 ⇒ 27.5	2.92		
		27.5 ⇒ 34.5	2.2		

	DAD 2 2 D1	0 - 22 - 44 m/min	2.2 - 1.5 kW
	DVF 3 4 D4 (VARIANT)	0 ⇒ 6 ⇒ 30 ⇒ 60 m/min	4 kW
	SSR 1 1 65	0.76 r.p.m.	1 × 65 Nm
	▲ TAD 1RP 2M3	0 - 24 m/min	2 × 3 kW
	● TAD 2RP 2M3		
	i		

	▲	●
	Max. H [m]	
T ₁	37.9	-
T ₂	41.25	-
T ₃	-	50.4

	Sollevamento I	Hoisting GB	Levage F	Heben D	Elevación E
	Traslazione carrello	Trolleying	Distribution	Katzfahren	Distribución
	Rotazione	Slewing	Orientation	Schwenken	Orientación
	Traslazione	Travelling	Translation	Schienenfahren	Traslación
	Direttiva sul livello acustico	Directive on noise level	Directive sur le niveau acoustique	Richtlinie für den Schall-Leistungspegel	Directiva sobre el nivel acustico
	Consultateci	Consult us	Nous consulter	Auf Anfrage	Consultarnos
	Potenza totale richiesta	Power requirements	Puissance totale nécessaire	Geforderte Stromstärke	Potencia necesaria
	Alimentazione	Power supply	Alimentation	Stromversorgung	Alimentación

Gru Comedil s.r.l.

A Terex Company



Divisione Automontanti

Via Alessandrina, 25 - 20095 Cusano Milanino (MI) - Italy
Tel. (+39) 02 613 16011 - Telefax (+39) 02 613 16034

Internet e-mail: info.CBR@comedil.com

Via S. Egidio 42/A, 33074 Fontanafredda (PN) - Italy
Tel. (+39) 0434 567 311 - Telefax (+39) 0434 998631

Internet e-mail: info@comedil.com
Internet home page: www.comedil.com