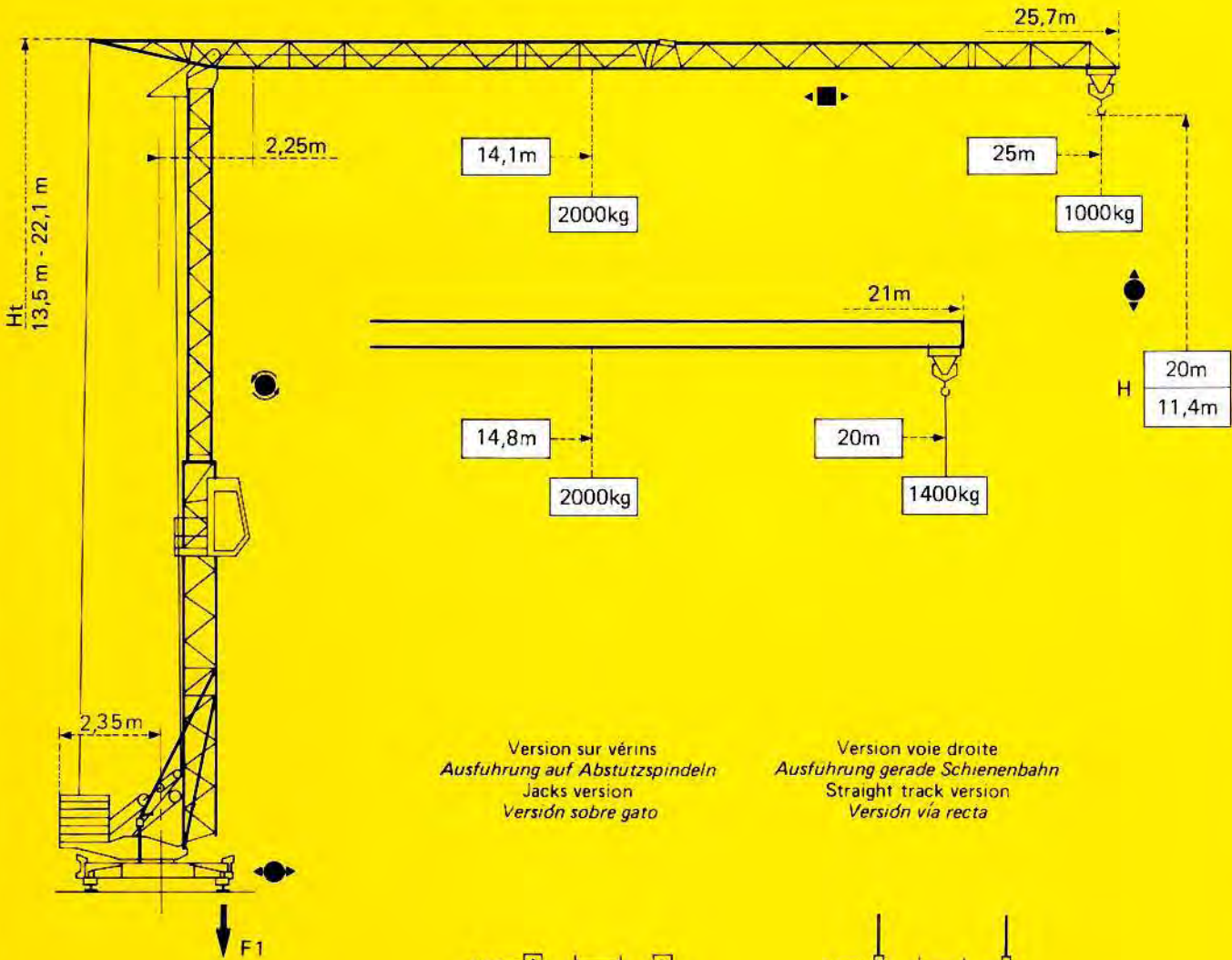


GMR 321 C

KXH 6

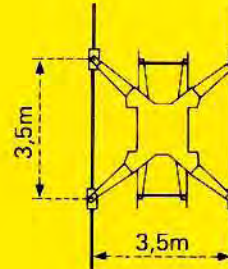
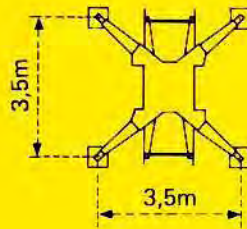
POTAIN 





Version sur vérins
Ausführung auf Abstützspindeln
Jacks version
Versión sobre gato


Version voie droite
Ausführung gerade Schienenbahn
Straight track version
Versión vía recta




F1 = Réactions Eckdrücke Reactions Reacciones

F1	● 13t	■ 8t
	8,9t	


- En service
- Hors service

 A vide sans lest ni train de transport, avec flèche et hauteur maximum.


- In Betrieb
- Ausser Betrieb

 Ohne Last, Ballast und Transportachse, mit Maximalausleger und Maximalhöhe.

- In service
- Out of service

 Without load, ballast or transport axles, with maximum jib and maximum height.

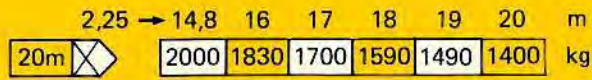
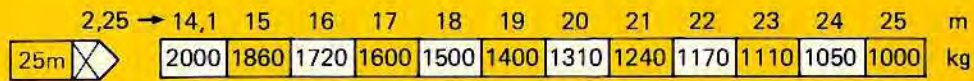
- En servicio
- Fuera de servicio

 Sin carga, sin lastre, ni tren de transporte, flecha y altura máximas.

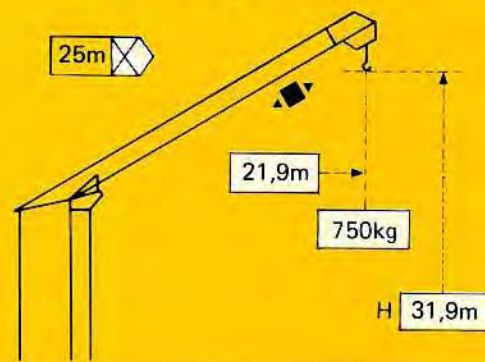
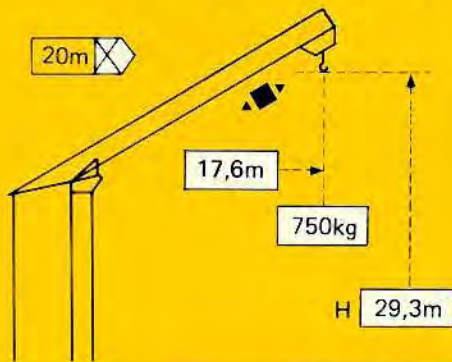
Courbes de charges Lastkurven Load diagrams Curvas de cargas



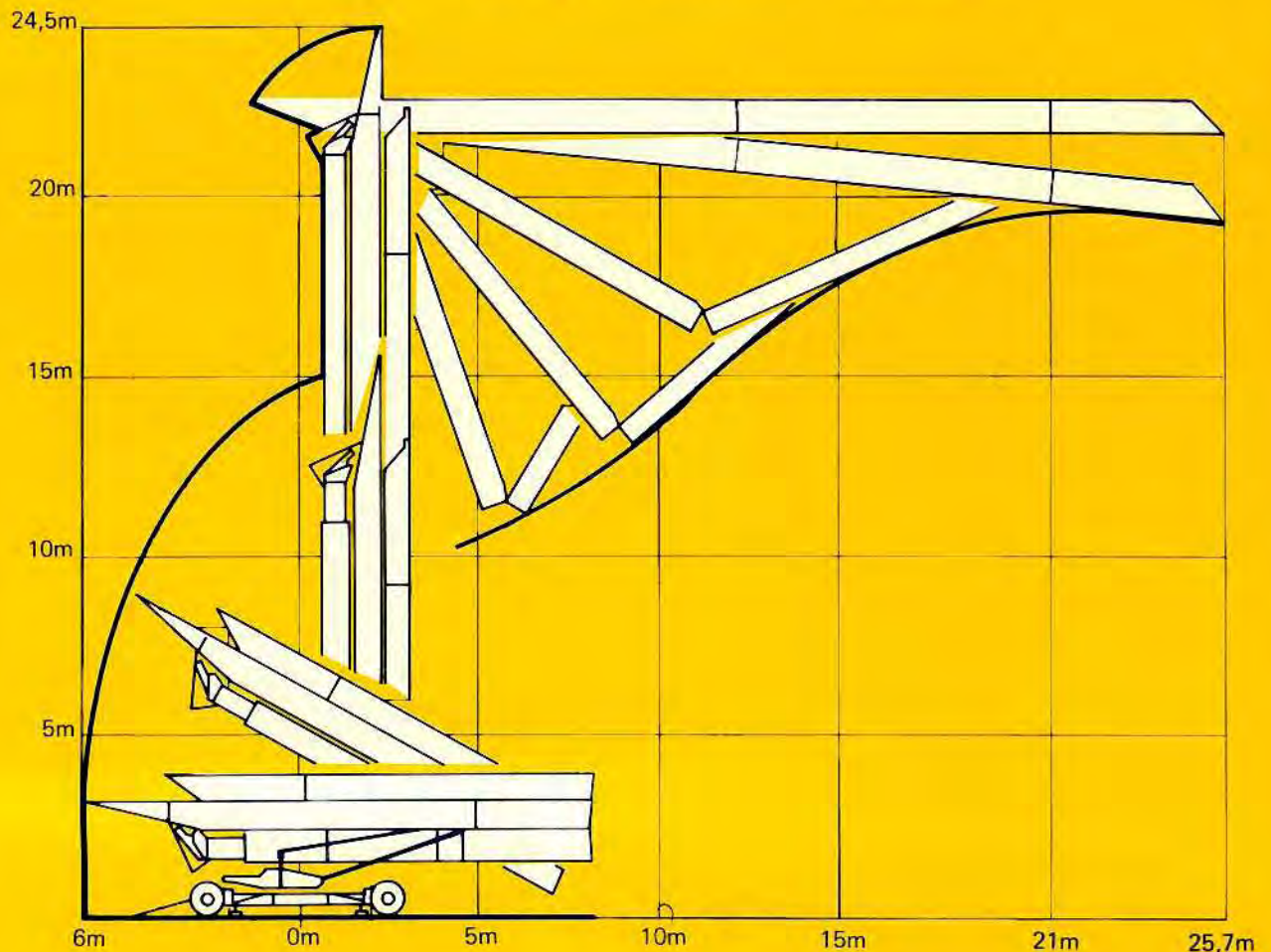
Flèche Ausleger Jib Flecha













Flèche relevée Ausleger in Steilstellung Luffing jib Flecha izada
Chariot distributeur Verfahrbare Laufkatze Traversing trolley Carro distribuidor



Montage Montage Erection Montaje

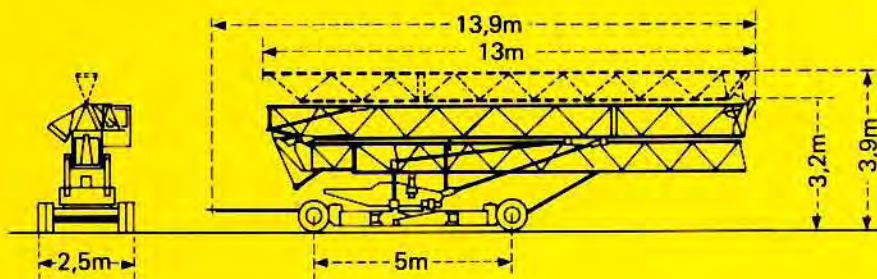


Mécanismes Antriebe Mechanisms Mecanismos

			m/min.	kg	ch-PS hp	kW
Levage Heben Hoisting Elevación	 15 TD PC 10		8	2000	5	3,7
			25	2000	15	11
			50	1000		
Distribution - <i>Katzfahren</i> Trolleying - <i>Distribución</i>		3D1 V5	35		4,5	3,3
		3D2 V5	22 - 44		4,5	3,3
Orientation - <i>Schwenken</i> Slewing - <i>Orientación</i>		RCV 20	0 - 1 tr/min U/min-rpm		3	2,2
Translation - <i>Kranfahren</i> Travelling - <i>Traslación</i>		TVD 121	25		2 x 1,4	2 x 1
Réseau - <i>Netzstrom</i> - Mains supply - <i>Red</i>					CEI 38 IEC 38	400V(+6%-10%) 50 Hz
Puissance électrique nécessaire - <i>Anschlusswert</i> - Necessary electric power - <i>Potencia electrica necesaria</i>					20 KVA	
Groupe électrogène - <i>Stromaggregat</i> - Generator set - <i>Grupo electrogeno</i>					*	

*Nous consulter - *Auf Anfrage* - Consult us - *Consultarnos*

Transport Transport Transport Transporte



Version transport lestée : Nous consulter
Transport mit Ballast, bitte bei uns rückfragen
 Road transported version with ballast : Consult us
Versión transporte con lastre : Consultarnos

Version semi-portée : Nous consulter
Ausführung als Sattelaufleger : Auf Anfrage
 Tractor towed version : Consult us
Versión en semi-remolque : Consultarnos



NF E 52081 - 82

DIN 15018.H1 B3

Conforme aux directives CEE 84/534 et 87/405 sur le niveau acoustique - *Gemäss EWG-Richtlinien 84/534 und 87/405 für den Schall- Leistungspegel*
 In compliance with the EEC 84/534 and 87/405 instructions on noise level - *Conforme con las directivas CEE 84/534 y 87/405 sobre el nivel acustico*

POTAIN 

GRUPE *LEGRIS* INDUSTRIES

18.Rue de Charbonnières, B.P. 173-F 69132 ECULLY Cedex
 Tél. 72.20.20.20 - Télex 375 213 - Fax 72.20.20.00

POTAIN GmbH Deutschland Tel : 06.105.704.0
 POTAIN U.K. Great Britain Tel : 0895.44.52.61
 Simma POTAIN Italia Tel : 02.97.96.71
 POTAIN Portugal Portugal Tel : 02.968.08.89



Stirnemann AG
Baumaschinen
4600 Olten
Telefon 062/205 95 11
www.stirnemann.ch



GMR 321 C

Réf.1988.44 KXH 6

Modifications réservées - *Anderungen vorbehalten* - Subject to modification - *Modificaciones reservadas*

Printed in France