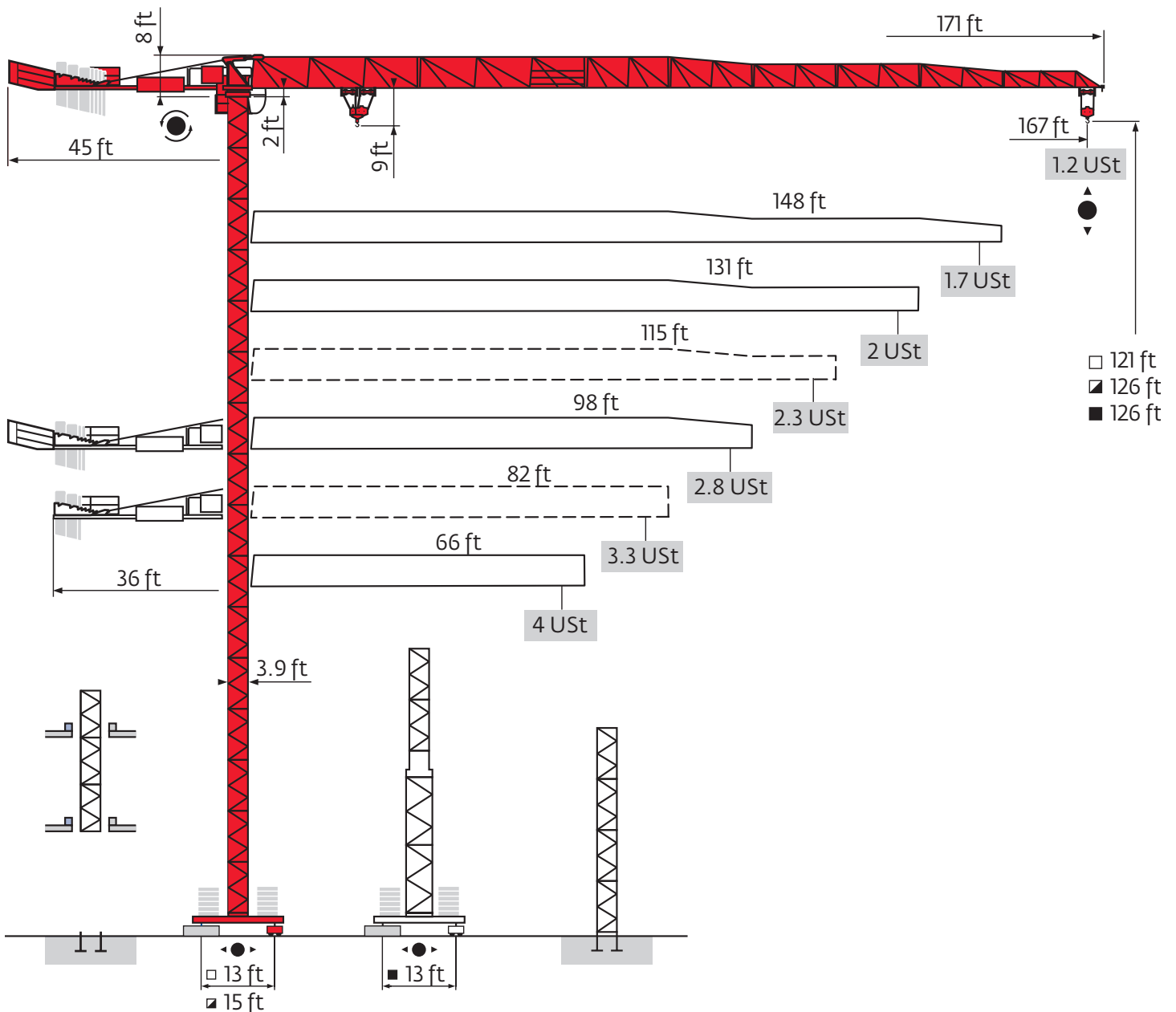


Potain MCT 78

Data Sheet

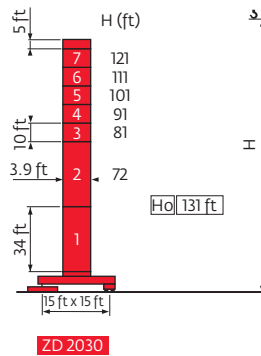
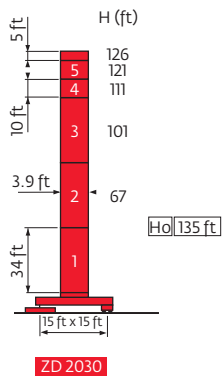
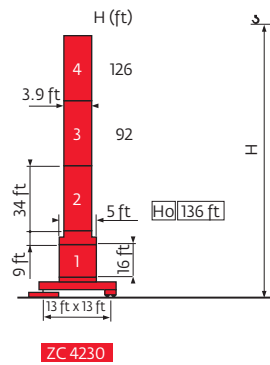
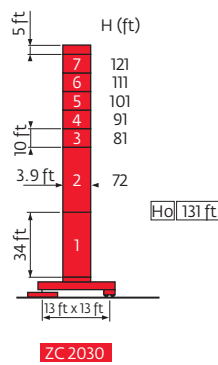
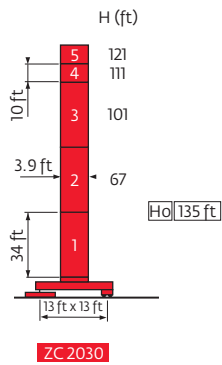
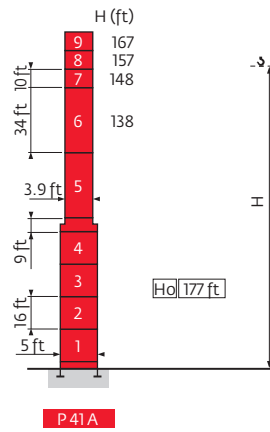
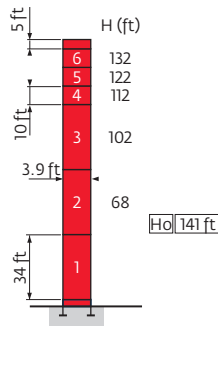
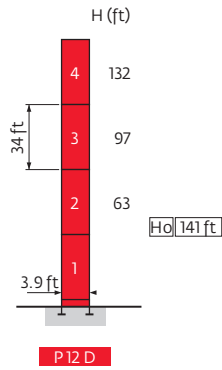
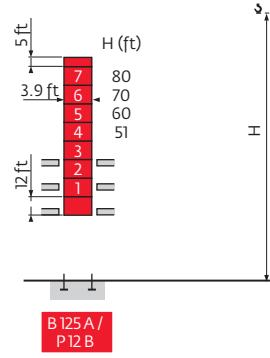
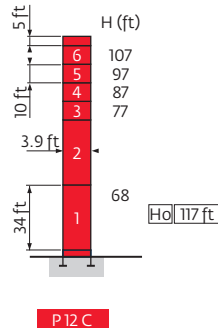
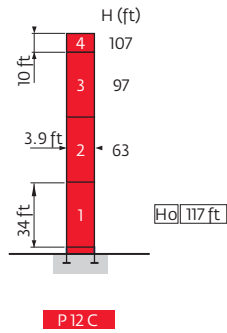
FEM 1.001-A3



Values have been rounded

Mast

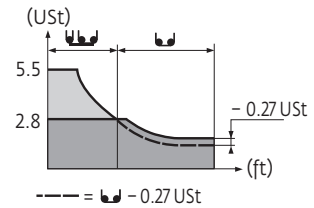
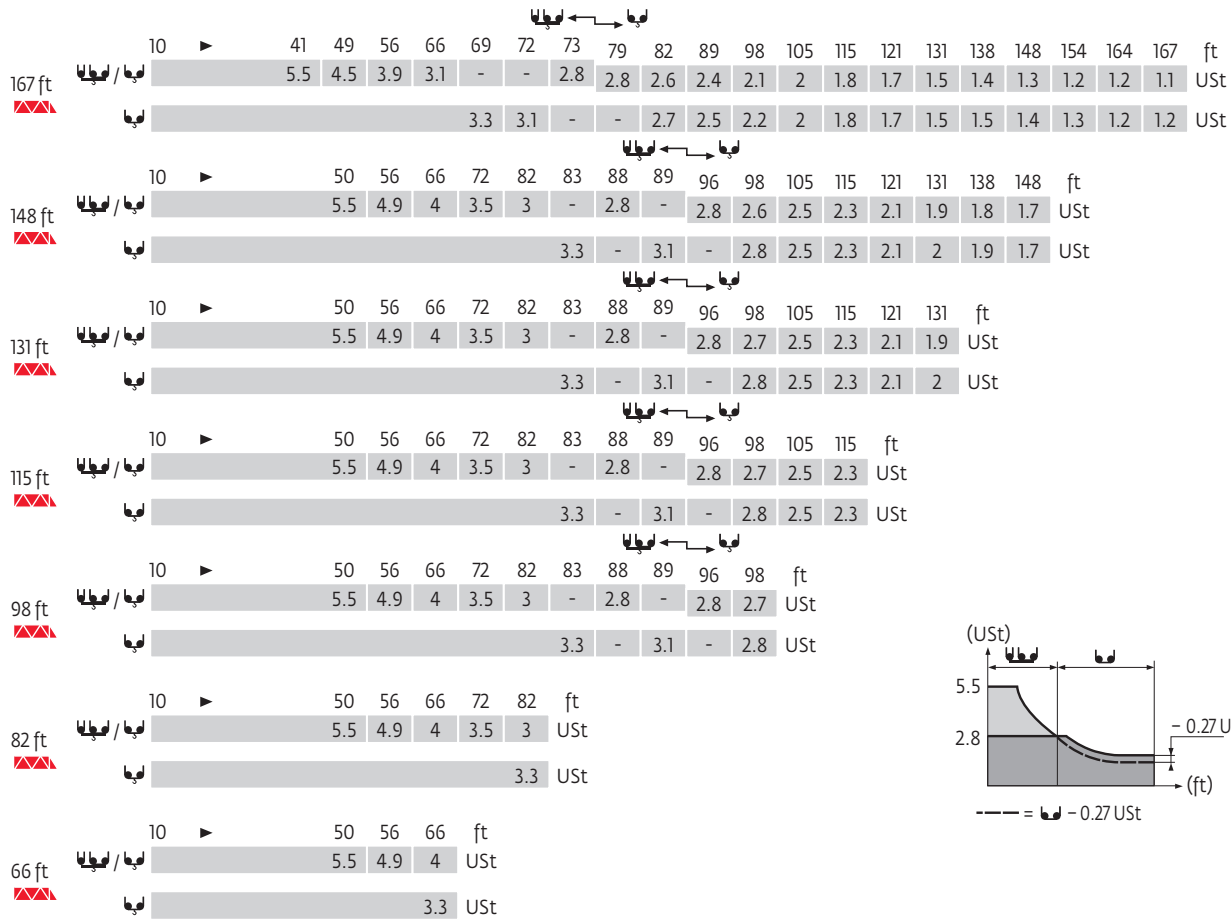
□ 3.9 ft
 ▴ 66 ft – 167 ft



ZC 2030 - ZC 4230 - ZD 2030

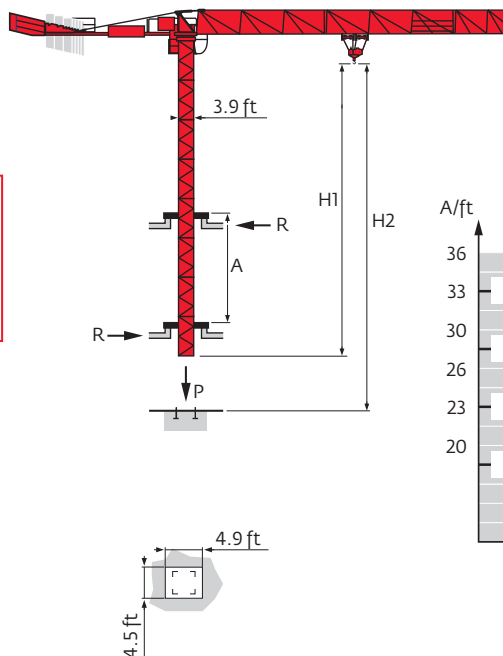
- 2 H2 = H
- 3 H3 = H - 1 ft
- 4 H4 = H - 0.7 ft

Load charts

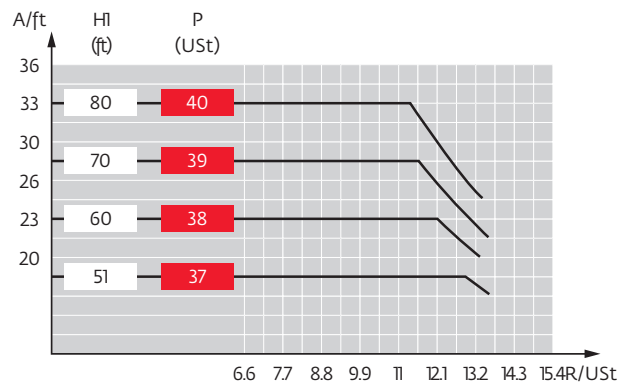


Climbing crane

- Ho** H without cab
- A** Distance between collars
- H1** Crane height
- P** Crane weight (in service)
- R** Horizontal reaction

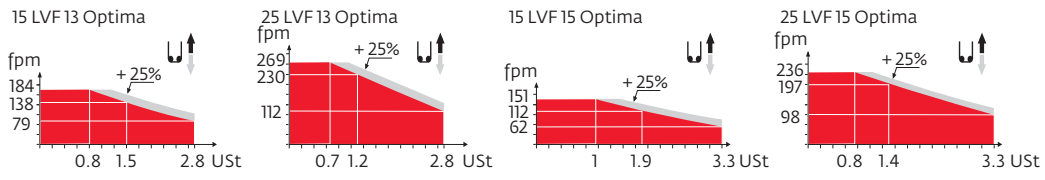


B 125 A



Mechanisms

												hp	kW				
	15 LVF 13 Optima	fpm	9	25	79	138	184	5	12	39	69	92	15	11	656 ft		
		Ust	2.8	2.8	2.8	1.5	0.9	5.5	5.5	5.5	3.1	5.2					
	25 LVF 13 Optima	fpm	13	36	112	184	230	269	7	20	56	92	115	135	25	18	1079 ft
		Ust	2.8	2.8	2.8	1.6	1.2	0.7	5.5	5.5	5.5	3.2	2.4	1.4			
	15 LVF 15 Optima	fpm	8	20	62	112	151						15	11	522 ft		
		Ust	3.3	3.3	3.3	1.9	1										
	25 LVF 15 Optima	fpm	12	31	98	157	197	236						25	18	748 ft	
		Ust	3.3	3.3	3.3	1.9	1.4	0.8									
	RVF 61 Optima+	rpm	0 - 0.8									7.5	5.5				
	4 DVF 3	fpm	0 - 207									5	3.7				
	ZC 2030 ZD 2030	RT 224	98									2 x 4.8	2 x 3.5				
	ZC 4230	RT 324	49 - 98									2 x 8.4	2 x 6.2				
CEI 38			IEC 38									kVA					
480 V (+6% -10%) 60 Hz												15 LVF : 25 kVA 25 LVF : 35 kVA					



- Hoisting
- Traveling
- Slewing
- Traveling

Constant improvement and engineering progress make it necessary that we reserve the right to make specification, equipment and price changes without notice. Illustrations shown may include optional equipment and accessories, and may not include all standard equipment.

Regional Headquarters

Americas
Manitowoc, Wisconsin, USA
Tel: +1 920 684 6621
Fax: +1 920 683 6277

Shady Grove, Pennsylvania, USA
Tel: +1 717 597 8121
Fax: +1 717 597 4062

Europe, Middle East, Africa
Ecully, France
Tel: +33 472 18 2020
Fax: +33 472 18 2000

Asia - Pacific
Shanghai, China
Tel: +86 21 6457 0066
Fax: +86 21 6457 4955

Potain MCT 78
Code 09-004-2M-X09



www.manitowoc.com