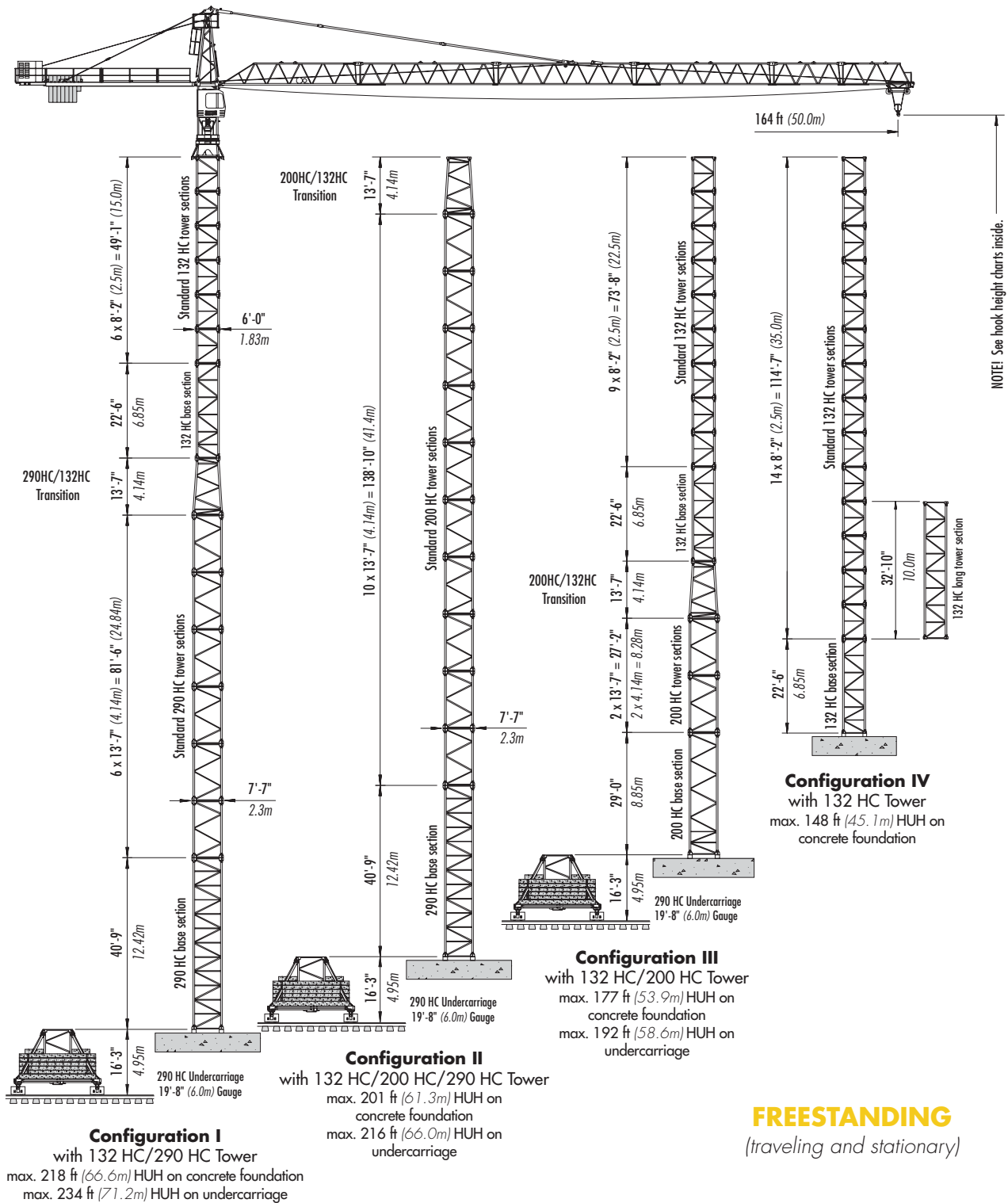


LIEBHERR 132 HC

TOWER CRANE



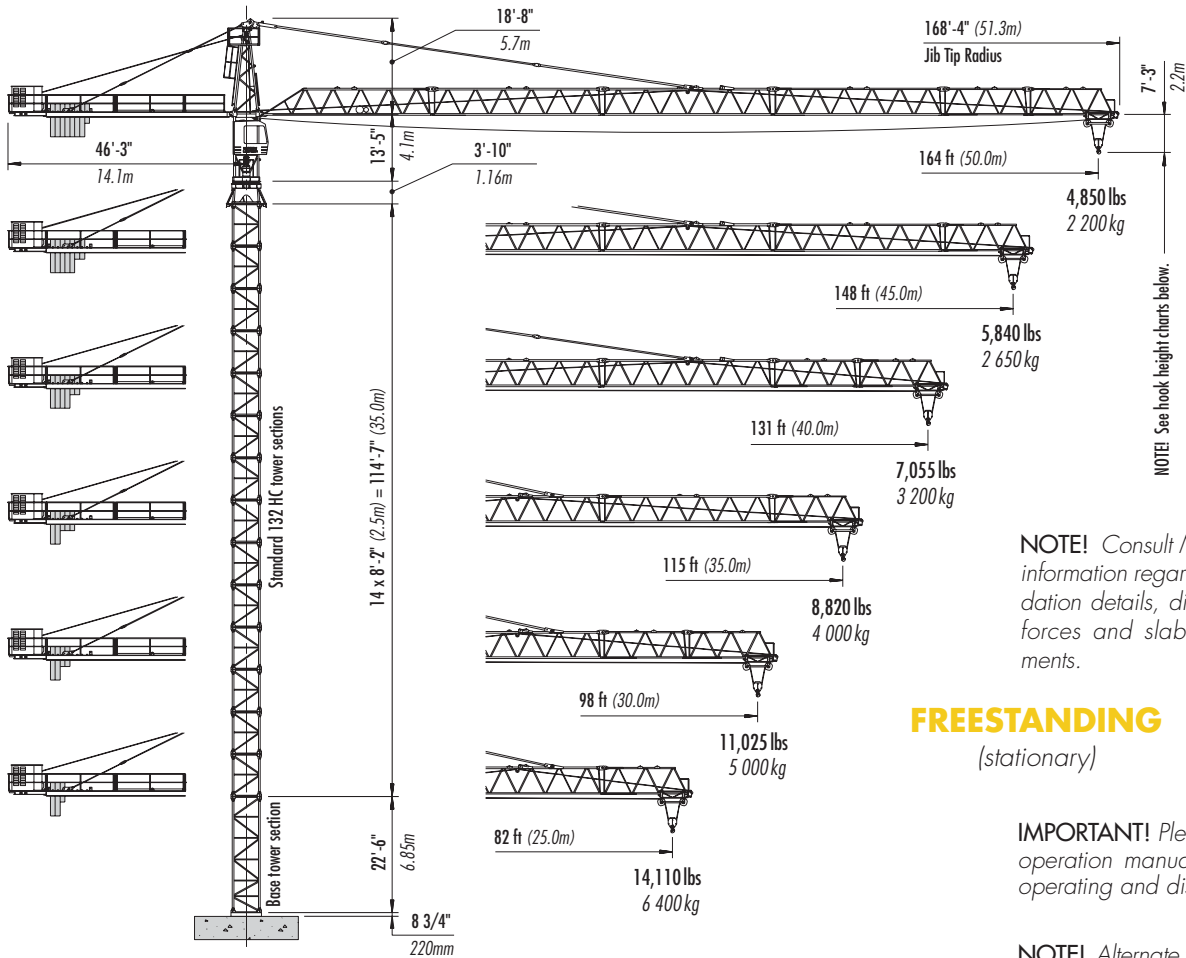
FREESTANDING
(traveling and stationary)



Morrow Equipment

Configurations

LIEBHERR 132 HC



NOTE! Consult Morrow for specific information regarding alternate foundation details, dimensions, reaction forces and slab opening requirements.

FREESTANDING (stationary)

IMPORTANT! Please consult crane's operation manual before erecting, operating and dismantling crane.

NOTE! Alternate tower combinations possible. Contact Morrow for additional information.

HOOK HEIGHTS

No. of Tower Sections	Tower Configuration I	Hook Height Concrete Foundation		Hook Height 6m Undercarriage	
		ft	m	ft	m
0	290HC BTS-40	51.8	15.8	67.0	20.4
1	290HC STS	65.4	19.9	80.6	24.6
2	290HC STS	78.9	24.1	94.2	28.7
3	290HC STS	92.5	28.2	107.8	32.9
4	290HC STS	106.1	32.3	121.4	37.0
5	290HC STS	119.7	36.5	134.9	41.1
6	290HC STS	133.3	40.6	148.5	45.3
7	Transition	146.9	44.8	162.1	49.4
8	132HC BTS-22	169.3	51.6	184.6	56.3
9	132HC STS	177.5	54.1	192.8	58.8
10	132HC STS	185.7	56.6	201.0	61.3
11	132HC STS	193.9	59.1	209.1	63.7
12	132HC STS	202.1	61.6	217.3	66.4
13	132HC STS	210.3	64.1	225.5	68.7
14 ¹	132HC STS	218.4	66.6	233.7	71.2

No. of Tower Sections	Tower Configuration II	Hook Height Concrete Foundation		Hook Height 6m Undercarriage	
		ft	m	ft	m
0	290HC BTS-40	51.8	15.8	67.0	20.4
1	200HC STS	65.4	19.9	80.6	24.6
2	200HC STS	78.9	24.1	94.2	28.7
3	200HC STS	92.5	28.2	107.8	32.9
4	200HC STS	106.1	32.3	121.4	37.0
5	200HC STS	119.7	36.5	134.9	41.1
6	200HC STS	133.3	40.6	148.5	45.3
7	200HC STS	146.9	44.8	162.1	49.4
8	200HC STS	160.4	48.9	175.7	53.6
9	200HC STS	174.0	53.0	189.3	57.7
10	200HC STS	187.6	57.2	202.9	61.8
11	Transition	201.2	61.3	216.4	66.0

No. of Tower Sections	Tower Configuration III	Hook Height Concrete Foundation		Hook Height 6m Undercarriage	
		ft	m	ft	m
0	200HC BTS-29	40.1	12.2	55.3	16.9
1	200HC STS	53.6	16.4	68.9	21.0
2	200HC STS	67.2	20.5	82.5	25.1
3	Transition	80.8	24.6	96.1	29.3
4	132HC BTS-22	103.3	31.5	118.5	36.1
5	132HC STS	111.5	34.0	126.7	38.6
6	132HC STS	119.7	36.5	134.9	41.1
7	132HC STS	127.8	39.0	143.1	43.6
8	132HC STS	136.0	41.5	151.3	46.1
9	132HC STS	144.2	44.0	159.5	48.6
10	132HC STS	152.4	46.5	167.7	51.1
11	132HC STS	160.6	49.0	175.8	53.6
12	132HC STS	168.8	51.4	184.0	56.1
13 ¹	132HC STS	177.0	53.9	192.2	58.6

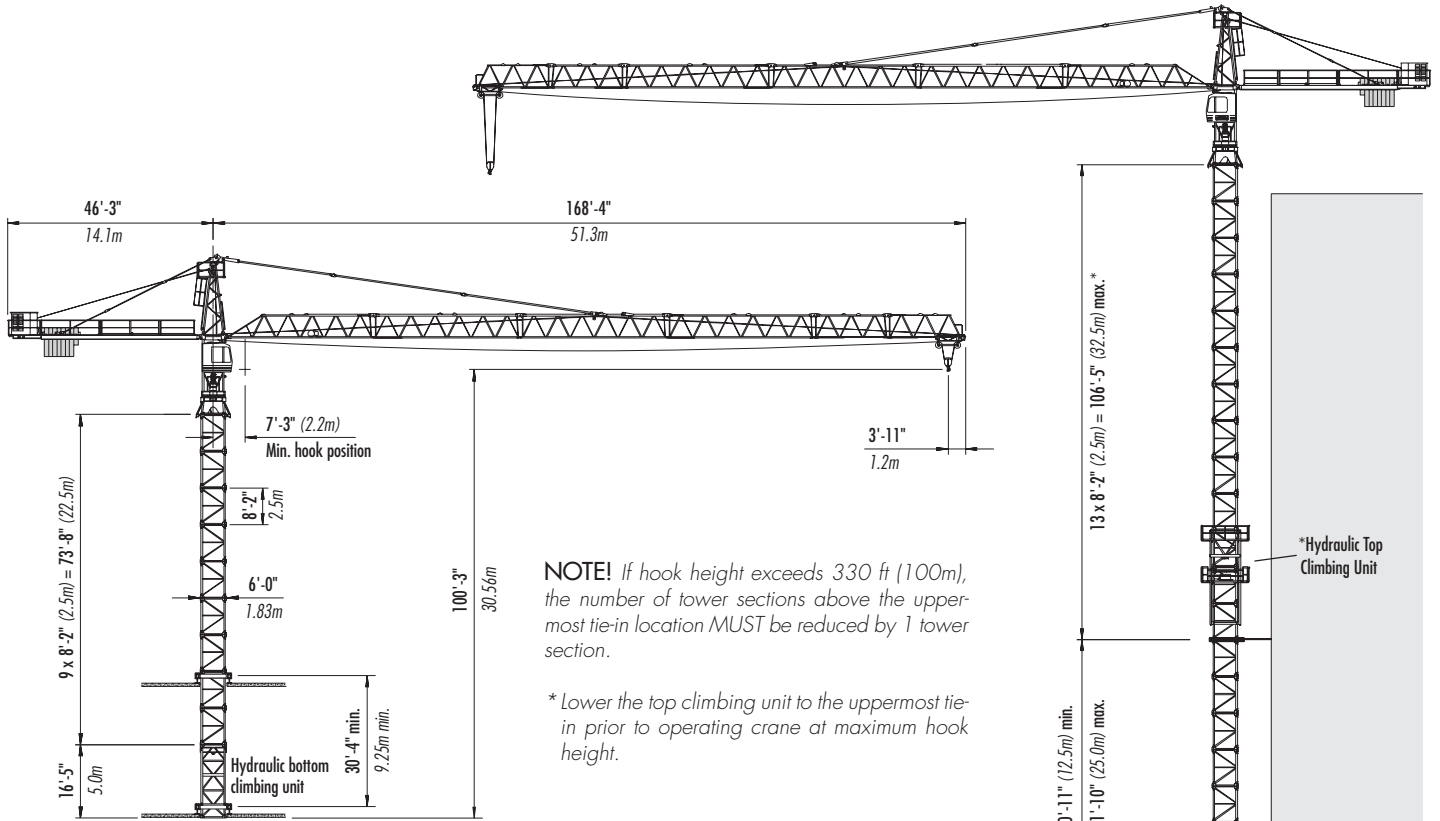
No. of Tower Sections	Tower Configuration IV	Hook Height Concrete Foundation	
		ft	m
0	132HC BTS-22	33.2	10.1
1	132HC STS	41.4	12.6
2	132HC STS	49.6	15.1
3	132HC STS	57.8	17.6
4	132HC STS	66.0	20.1
5	132HC STS	74.2	22.6
6	132HC STS	82.4	25.1
7	132HC STS	90.5	27.6
8	132HC STS	98.7	30.1
9	132HC STS	106.9	32.6
10	132HC STS	115.1	35.1
11	132HC STS	123.3	37.6
12	132HC STS	131.5	40.1
13	132HC STS	139.7	42.6
14 ²	132HC STS	147.8	45.1

¹ Remove top climbing unit from crane prior to operating crane at maximum hook height.

² Lower top climbing unit to base of crane prior to operating crane at maximum hook height.

Configurations

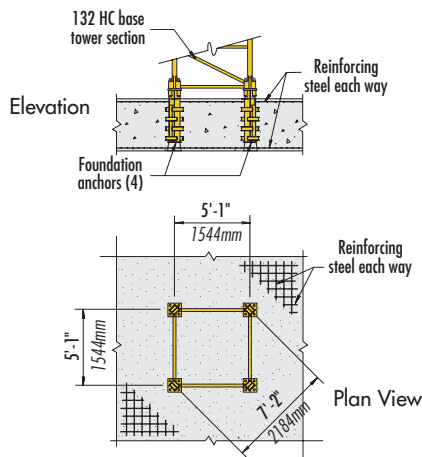
LIEBHERR 132 HC



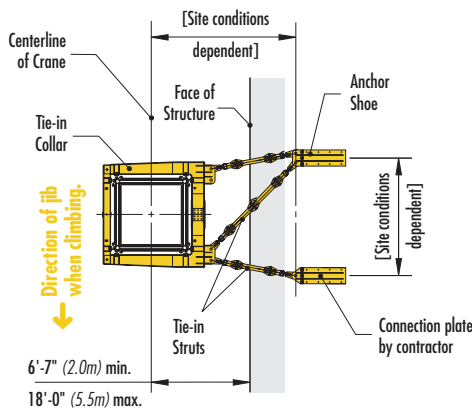
NOTE! If hook height exceeds 330 ft (100m), the number of tower sections above the uppermost tie-in location **MUST** be reduced by 1 tower section.

* Lower the top climbing unit to the uppermost tie-in prior to operating crane at maximum hook height.

BOTTOM CLIMBING with 132 HC Tower Sections (inside structure)



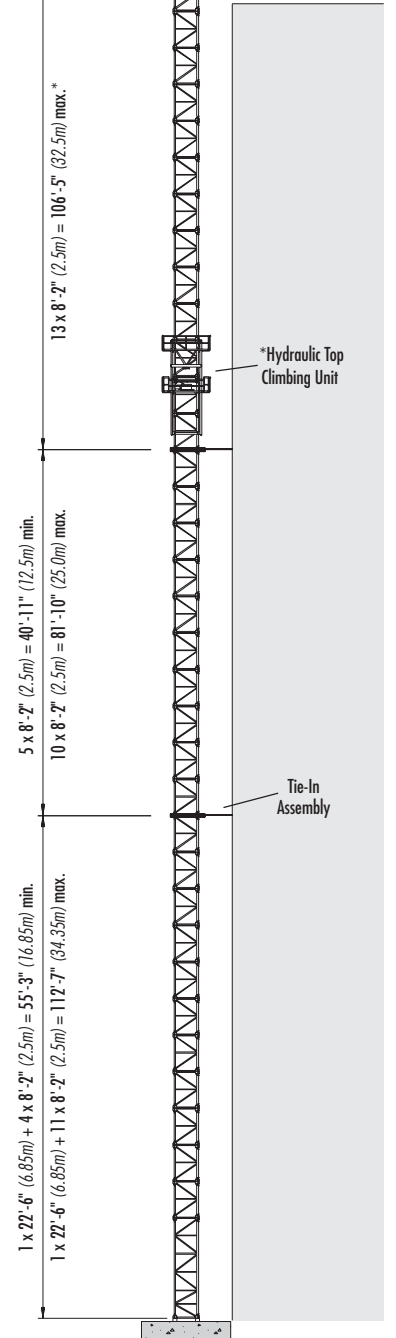
FOUNDATION DETAILS with 132 HC Base Tower (concrete slab)



TIE-IN ASSEMBLY (Plan View)

NOTE! The tie-in assembly shown is an example of a typical installation. Please note, however, that factors determining the installation of tie-in assemblies may vary due to project specific criteria. Contact Morrow for information regarding dimensions, reaction forces, tie-in locations and slab opening requirements.

TOP CLIMBING with 132 HC Tower Sections (tied to structure)



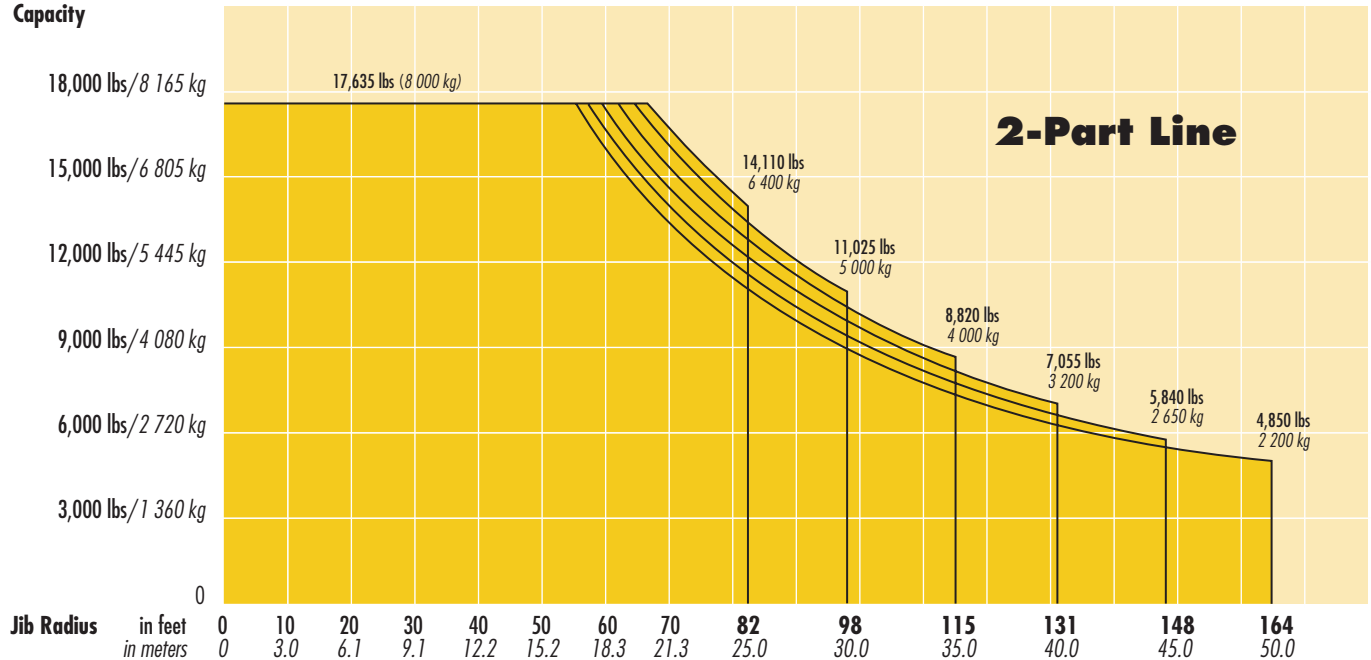
Radius and Capacities

LIEBHERR Tower Crane Model 132 HC

2-Part Line

Hook Radius	2-Part Line Max Capacity – Radius	ft m	40	50	60	70	80	82	90	98	105	110	115	123	131	139	148	156	164	
			12.2	15.2	18.3	21.3	24.4	25.0	27.5	30.0	32.0	33.5	35.0	37.5	40.0	42.5	45.0	47.5	50.0	
164 ft 50.0m	17,635 lbs – 54.5 ft 8 000 kg – 16.6m	lbs kg	17,635 8 000	17,635 8 000	16,180 7 340	13,710 6 220	11,815 5 360	11,175 5 070	10,010 4 540	9,060 4 110	8,355 3 790	7,825 3 550	7,560 3 430	6,945 3 150	6,415 2 910	5,950 2 700	5,555 2 520	5,180 2 350	4,850 2 200	
148 ft 45.0m	17,635 lbs – 56.8 ft 8 000 kg – 17.3m	lbs kg	17,635 8 000	17,635 8 000	16,910 7 670	14,350 6 510	12,370 5 610	11,705 5 310	10,495 4 760	9,500 4 310	8,765 3 975	8,200 3 720	7,935 3 600	7,300 3 310	6,745 3 060	6,285 2 850	5,840 2 650			
131 ft 40.0m	17,635 lbs – 58.7 ft 8 000 kg – 17.9m	lbs kg	17,635 8 000	17,635 8 000	17,550 7 960	14,945 6 780	12,875 5 840	12,190 5 530	10,935 4 960	9,900 4 490	9,125 4 140	8,555 3 880	8,270 3 750	7,630 3 460	7,055 3 200					
115 ft 35.0m	17,635 lbs – 62.0 ft 8 000 kg – 18.9m	lbs kg	17,635 8 000	17,635 8 000	17,635 8 000	15,875 7 200	13,690 6 210	12,960 5 880	11,640 5 280	10,535 4 780	9,735 4 415	9,125 4 140	8,820 4 000							
98 ft 30.0m	17,635 lbs – 64.6 ft 8 000 kg – 19.7m	lbs kg	17,635 8 000	17,635 8 000	17,635 8 000	16,580 7 520	14,285 6 480	13,535 6 140	12,170 5 520	11,025 5 000										
82 ft 25.0m	17,635 lbs – 66.9 ft 8 000 kg – 20.4m	lbs kg	17,635 8 000	17,635 8 000	17,635 8 000	16,930 7 680	14,815 6 720	14,110 6 400												

Capacity



SPECIFICATIONS

LIEBHERR Tower Crane Model 132 HC

Hoist Speed and Capacity

Hoist Unit WiW271RX108	2-Part Line				
	Gear	Capacity	Line Speed	Capacity	Line Speed
82 hp (61 kW) AC hoist unit 3-speed gearbox Electromagnetic gear shifting Eddy current brake LS-164	1	up to 17,635 lbs	@ 52 fpm	up to 8 000 kg	@ 16 m/min
	2	up to 9,590 lbs	@ 187 fpm	up to 4 350 kg	@ 57 m/min
	3	up to 3,745 lbs	@ 361 fpm	up to 1 700 kg	@ 110 m/min

NOTE! Capacities and line speeds indicated will vary depending on the amount of hoist rope installed. This crane model may be equipped with a hoist unit other than that specified in the data above. To verify, check the serial number of the crane and refer to the Liebherr 132 HC Operation Manual for additional information.

Motor Information

Drive Unit	Horsepower	Kilowatts	Speed	
Trolley (2-part line)	5.4 hp	4.0 kW	39 - 128 - 240 fpm	12 - 39 - 73 m/min
Swing (fluid coupling) *	2 x 6.7 hp	2 x 5.0 kW	0.9 rpm	
Travelling (fluid coupling)	2 x 4 hp	2 x 3.0 kW	82 fpm	25.0 m/min

* **NOTE!** Jibs up to and including 131-ft (40.0m) hook reach require only one swing motor; jibs with 148-ft (45.0m) hook reach and longer require two swing motors.

Power Requirements

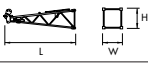
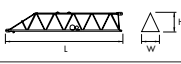
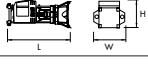
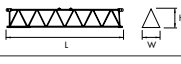

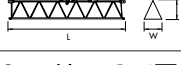



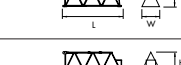

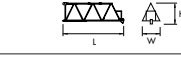

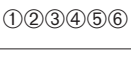

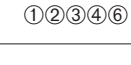



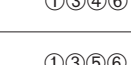
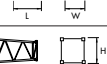
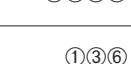


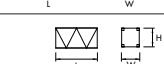
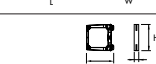
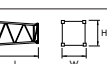
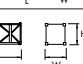
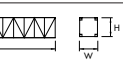
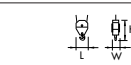
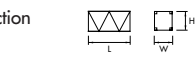
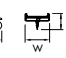
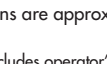

480 V — 3-phase — 60 Hz — 150 Amperes

Specifications subject to change without prior notice. For additional information, contact Morrow Equipment.

Morrow Equipment Co., L.L.C.

Component List

LIEBHERR 132 HC

Description	Dimensions L x W x H	Weight	Description	Dimensions L x W x H	Weight
Tower Top	 18'-9" x 4'-9" x 5'-1" 5.72m x 1.46m x 1.56m	3,030 lbs 1 375 kg	Jib Section ① #611	 33'-7" x 5'-2" x 6'-0" 10.24m x 1.58m x 1.83m	3,925 lbs 1 780 kg
Slewing Assembly (Complete) ¹	 19'-1" x 8'-8" x 7'-7" 5.82m x 2.65m x 2.3m	14,500 lbs 6 575 kg	Jib Section ② #621	 33'-10" x 4'-0" x 5'-7" 10.3m x 1.23m x 1.7m	2,600 lbs 1 180 kg
Slewing Assembly Upper Part ²	 14'-1" x 8'-8" x 7'-7" 4.3m x 2.65m x 2.3m	9,450 lbs 4 285 kg	Jib Section ③ #622	 33'-10" x 4'-0" x 5'-7" 10.3m x 1.23m x 1.7m	3,040 lbs 1 380 kg
Slewing Assembly Lower Part ³	 5'-0" x 7'-5" x 7'-1" 1.52m x 2.26m x 2.17m	5,050 lbs 2 290 kg	Jib Section ④ #631	 33'-10" x 4'-0" x 5'-7" 10.3m x 1.23m x 1.7m	2,095 lbs 950 kg
Hoist Unit with Frame ⁴ 82 hp (61 kW)	 7'-6" x 13'-6" x 5'-6" 2.29m x 4.1m x 1.68m	10,580 lbs 4 800 kg	Jib Section ⑤ #632	 17'-5" x 4'-0" x 5'-7" 5.3m x 1.23m x 1.7m	1,070 lbs 485 kg
Counterjib ⁵	 36'-1" x 7'-10" x 4'-5" 11.0m x 2.4m x 1.34m	5,510 lbs 2 500 kg	Jib Section ⑥ #641	 17'-10" x 4'-7" x 5'-9" 5.44m x 1.43m x 1.76m	1,115 lbs 505 kg
Counterweight Block A	 3'-11" x 11" x 4'-9" 1.19m x 0.28m x 2.05m	3,640 lbs 1 650 kg	Jib Assembly ⁶ 164-ft (50.0m)	 ①②③④⑤⑥ 165'-4" x 5'-2" x 6'-0" 50.4m x 1.58m x 1.83m	15,695 lbs 7 120 kg
Counterweight Block B	 3'-11" x 11" x 4'-1" 1.19m x 0.28m x 1.25m	2,205 lbs 1 000 kg	Jib Assembly ⁶ 148-ft (45.0m)	 ①②③④⑥ 148'-11" x 5'-2" x 6'-0" 45.4m x 1.58m x 1.83m	14,640 lbs 6 640 kg
Base Tower Section 132 HC	 22'-6" x 6'-0" x 6'-0" 6.85m x 1.83m x 1.83m	5,355 lbs 2 430 kg	Jib Assembly ⁶ 131-ft (40.0m)	 ①②③⑤⑥ 132'-7" x 5'-2" x 6'-0" 40.4m x 1.58m x 1.83m	13,670 lbs 6 200 kg
Long Tower Section 132 HC	 32'-10" x 6'-0" x 6'-0" 10.0m x 1.83m x 1.83m	7,055 lbs 3 200 kg	Jib Assembly ⁶ 115-ft (35.0m)	 ①③④⑥ 116'-2" x 5'-2" x 6'-0" 35.4m x 1.58m x 1.83m	11,685 lbs 5 300 kg
Standard Tower Section 132 HC	 8'-2" x 6'-0" x 6'-0" 2.5m x 1.83m x 1.83m	2,160 lbs 980 kg	Jib Assembly ⁶ 98-ft (30.0m)	 ①③⑤⑥ 99'-9" x 5'-2" x 6'-0" 30.4m x 1.58m x 1.83m	10,580 lbs 4 800 kg
Transition Section 200 HC/132 HC	 13'-7" x 7'-7" x 7'-7" 4.14m x 2.3m x 2.3m	5,290 lbs 2 400 kg	Jib Assembly ⁶ 82-ft (25.0m)	 ①③⑥ 83'-4" x 5'-2" x 6'-0" 25.4m x 1.58m x 1.83m	9,500 lbs 4 310 kg
Base Tower Section 200 HC	 29'-0" x 7'-7" x 7'-7" 8.85m x 2.3m x 2.3m	8,960 lbs 4 065 kg	Top Climbing Unit w/hydraulics	 21'-2" x 6'-11" x 7'-11" 6.45m x 2.1m x 2.42m	9,900 lbs 4 490 kg
Standard Tower Section 200 HC	 13'-7" x 7'-7" x 7'-7" 4.14m x 2.3m x 2.3m	4,520 lbs 2 050 kg	Climbing Collar 132 HC	 8'-2" x 7'-8" x 1'-5" 2.5m x 2.33m x 0.43m	1,765 lbs 800 kg
Transition Section 290 HC/132 HC	 13'-7" x 7'-7" x 7'-7" 4.14m x 2.3m x 2.3m	5,290 lbs 2 400 kg	Bottom Climbing Unit w/hydraulics	 16'-5" x 6'-0" x 6'-0" 5.0m x 1.83m x 1.83m	9,390 lbs 4 260 kg
Base Tower Section 290 HC	 40'-9" x 7'-7" x 7'-7" 12.42m x 2.3m x 2.3m	17,505 lbs 7 940 kg	Hook Block	 1'-7" x 1'-6" x 2'-11" 0.49m x 0.45m x 0.9m	705 lbs 320 kg
Standard Tower Section 290 HC	 13'-7" x 7'-7" x 7'-7" 4.14m x 2.3m x 2.3m	5,025 lbs 2 280 kg	Trolley	 5'-11" x 4'-9" x 3'-1" 1.8m x 1.44m x 0.94m	640 lbs 290 kg

NOTE: Weights and dimensions are approximate. Scale components before lifting.

¹ Slewing Assembly Complete includes operator's cab, two swing motors, slewing ring, slewing ring support and climbing shoes.

² Slewing Assembly Upper Part includes operator's cab and two swing motors.

³ Slewing Assembly Lower Part includes slewing ring, slewing ring support and climbing shoes.

⁴ Includes 82 hp (61 kW) hoist unit, electrical panel and handrails. Does not include wire rope.

⁵ Counterjib includes counterjib section, pendant bars and handrails.

⁶ Jib Assemblies include jib sections, pendant bars, pendant bar connecting pins and plates, trolley drive unit, trolley wire rope and trolley.



Morrow Equipment
C O M P A N Y, L. L. C.

3218 Pringle Road SE • P O Box 3306 • Salem, Oregon 97302-0306 USA
Tel. 503.585.5721 • Fax. 503.363.1172 • www.morrowequipment.com

The American home of
LIEBHERR

Atlanta, GA • Charlotte, NC • Chicago, IL • Denver, CO • Honolulu, HI • Houston, TX • Los Angeles, CA • Las Vegas, NV
Millwood, NY • St. Louis, MO • San Francisco, CA • Dallas, TX • Seattle, WA • Miami, FL • Tampa, FL • Washington, DC
Sydney, Australia • Wellington, New Zealand • Vancouver, BC, Canada • Toronto, ON, Canada • México DF, México