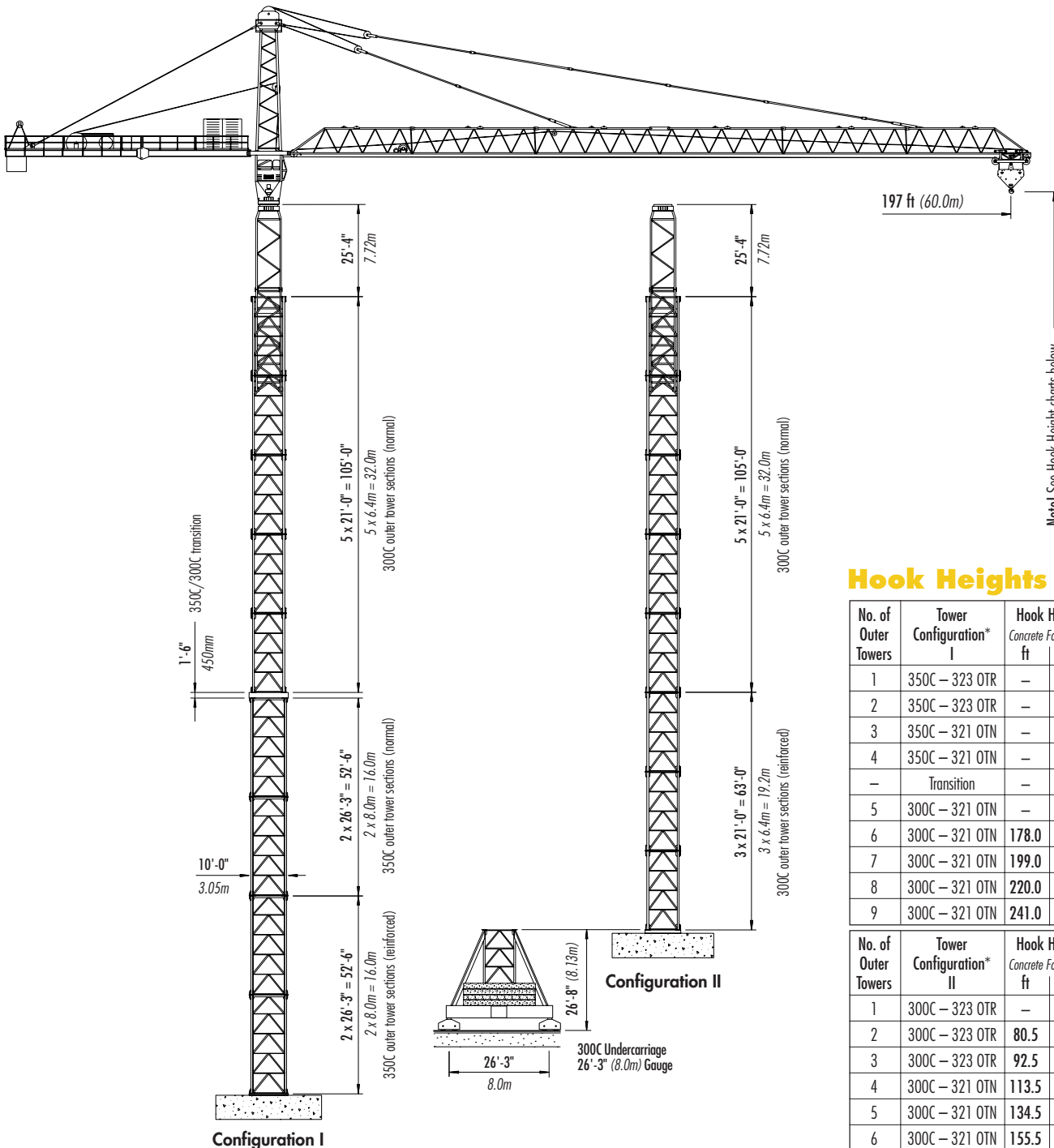


LIEBHERR 300 C *Series Two*

TOWER CRANE



Hook Heights

No. of Outer Towers	Tower Configuration*	Hook Height	
		Concrete Foundation	
		ft	m
1	350C - 323 OTR	-	-
2	350C - 323 OTR	-	-
3	350C - 321 OTN	-	-
4	350C - 321 OTN	-	-
-	Transition	-	-
5	300C - 321 OTN	-	-
6	300C - 321 OTN	178.0	54.3
7	300C - 321 OTN	199.0	60.7
8	300C - 321 OTN	220.0	67.1
9	300C - 321 OTN	241.0	73.5

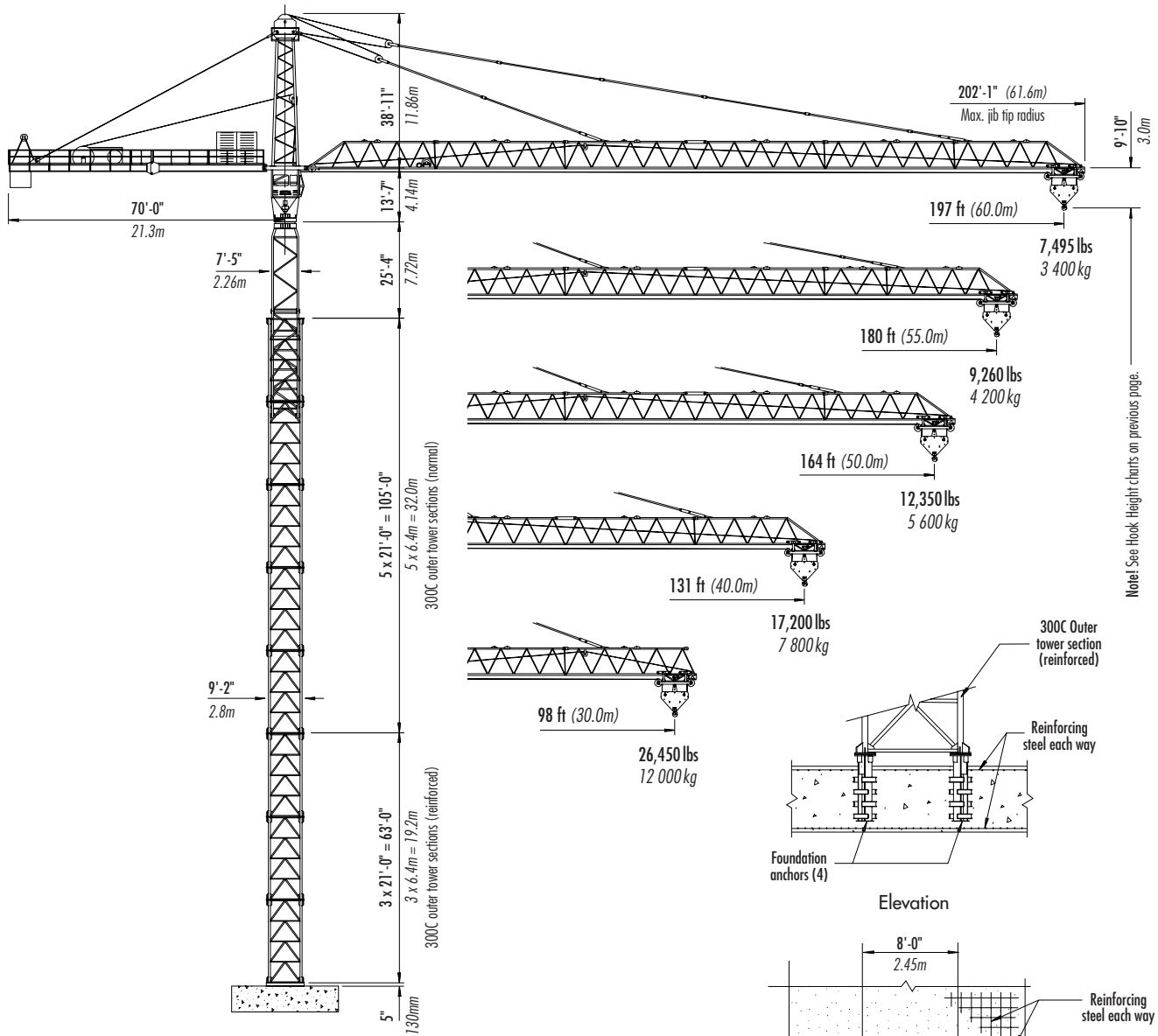
No. of Outer Towers	Tower Configuration*	Hook Height		Hook Height	
		Concrete Foundation	8m Undercarriage	ft	m
		ft	m	ft	m
1	300C - 323 OTR	-	-	-	-
2	300C - 323 OTR	80.5	21.8	97.8	29.8
3	300C - 323 OTR	92.5	28.2	118.8	36.2
4	300C - 321 OTN	113.5	34.6	139.8	42.6
5	300C - 321 OTN	134.5	41.0	160.8	49.0
6	300C - 321 OTN	155.5	47.4	181.8	55.4
7	300C - 321 OTN	176.5	53.8	202.8	61.8
8	300C - 321 OTN	197.5	60.2	223.8	68.2

* Other tower combinations are possible. Contact Morrow for information.

FREESTANDING
Stationary & Travelling

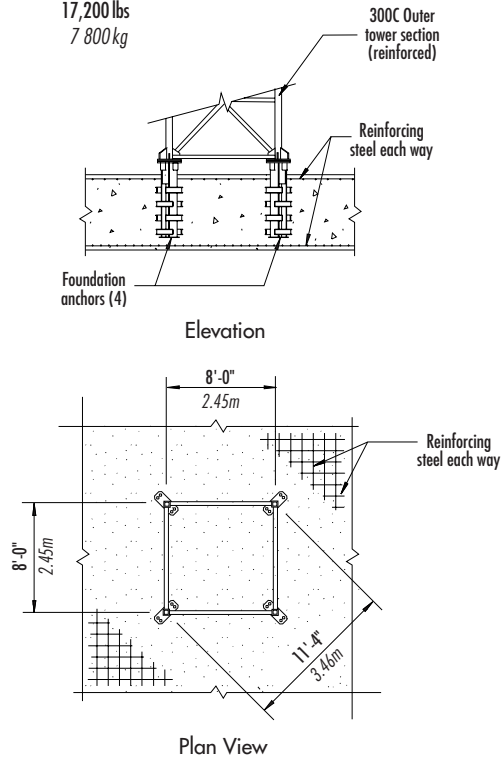


Morrow Equipment



STATIONARY FREESTANDING with 300C Tower Sections

Note! Consult Morrow for specific information regarding alternate tower configurations, alternate foundation details, dimensions, reaction forces and slab opening requirements.

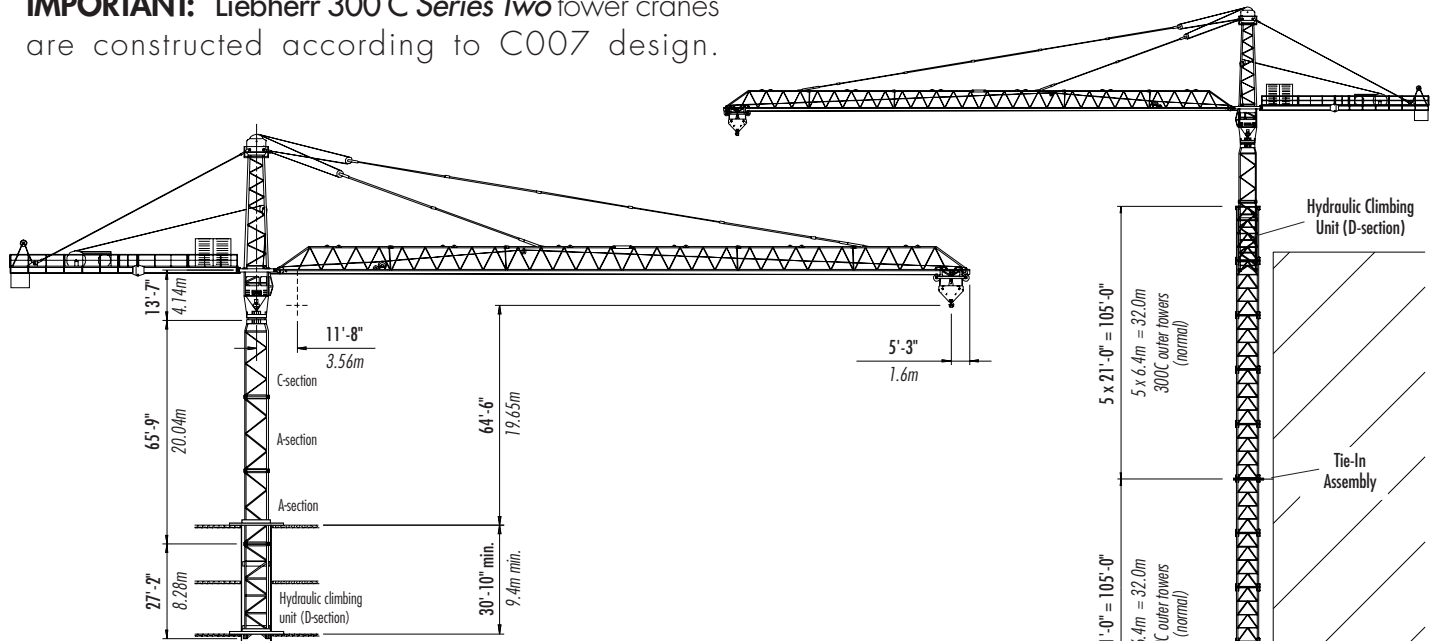


FOUNDATION DETAILS with 300C Outer Tower (Concrete Slab)

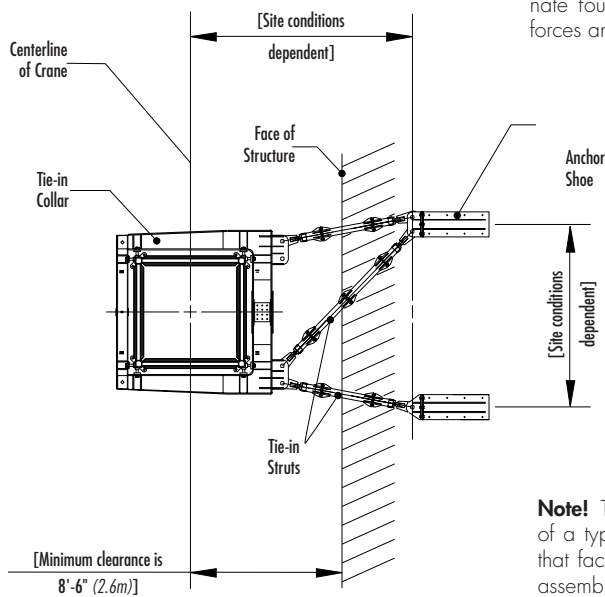
Configurations

LIEBHERR 300 C Series Two

IMPORTANT: Liebherr 300 C Series Two tower cranes are constructed according to C007 design.



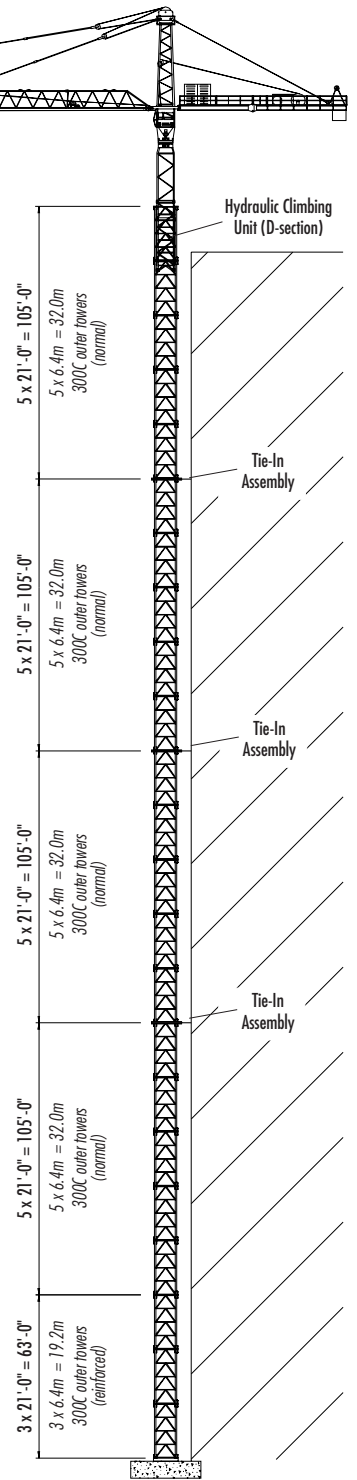
BOTTOM CLIMBING with 300C Inner Towers (Inside Structure)



TIE-IN ASSEMBLY (Plan View)

Note! Consult Morrow for specific information regarding alternate tower configurations, alternate foundation details, dimensions, reaction forces and slab opening requirements.

Note! The tie-in assembly shown is an example of a typical installation. Please note, however, that factors determining the installation of tie-in assemblies may vary due to project specific criteria. Contact Morrow for information regarding dimensions, reaction forces, tie-in locations, foundation details and slab opening requirements.



TOP CLIMBING with 300C Tower Sections (Tied to Structure)

Radius and Capacities

LIEBHERR Tower Crane Model 300 C Series Two

IMPORTANT: Liebherr 300 C Series Two tower cranes are constructed according to C007 design.

2-Part Line

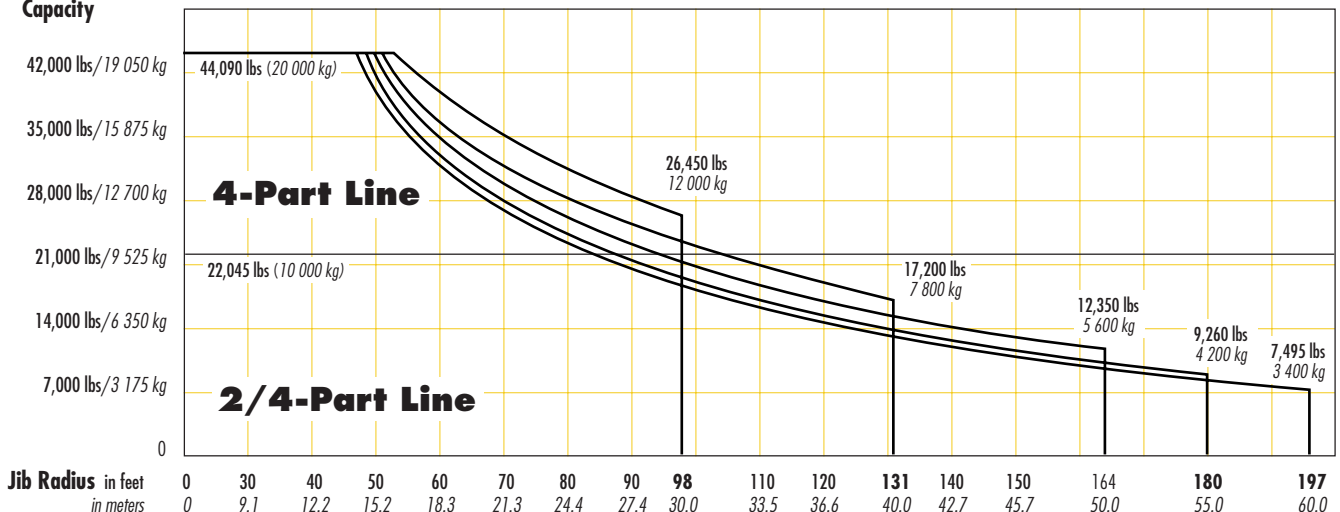
Hook Radius	2-Part Line Max Capacity – Radius	ft m	40	50	60	70	80	90	98	110	120	131	140	150	164	170	180	190	197
			12.2	15.2	18.3	21.3	24.4	27.4	30.0	33.5	36.6	40.0	42.7	45.7	50.0	51.8	55.0	57.9	60.0
197 ft 60.0m	22,045 lbs – 84 ft 10 000 kg – 25.6m	lbs kg	22,045 10 000	22,045 10 000	22,045 10 000	22,045 10 000	22,045 10 000	20,355 9 230	19,000 8 620	17,000 7 710	15,100 6 650	13,300 6 030	12,300 5 580	11,100 5 030	10,000 4 540	9,100 4 130	8,500 3 855	7,800 3 540	7,495 3 400
180 ft 55.0m	22,045 lbs – 88 ft 10 000 kg – 26.8m	lbs kg	22,045 10 000	22,045 10 000	22,045 10 000	22,045 10 000	22,045 10 000	21,500 9 750	19,800 8 980	17,200 7 800	15,800 7 170	14,500 6 580	13,000 5 900	11,800 5 350	10,300 4 670	9,800 4 450	9,260 4 200		
164 ft 50.0m	22,045 lbs – 94 ft 10 000 kg – 28.7m	lbs kg	22,045 10 000	22,045 10 000	22,045 10 000	22,045 10 000	22,045 10 000	22,045 10 000	21,100 9 570	18,750 8 500	17,300 7 845	15,760 7 150	14,800 6 715	13,600 6 170	12,350 5 600				
131 ft 40.0m	22,045 lbs – 104 ft 10 000 kg – 31.7m	lbs kg	22,045 10 000	22,045 10 000	22,045 10 000	22,045 10 000	22,045 10 000	22,045 10 000	22,045 10 000	20,750 9 410	19,100 8 665	17,200 7 800							
98 ft 30.0m	22,045 lbs – 98 ft 10 000 kg – 30.0m	lbs kg	22,045 10 000	22,045 10 000	22,045 10 000	22,045 10 000	22,045 10 000	22,045 10 000	22,045 10 000										

4-Part Line

Hook Radius	4-Part Line Max Capacity – Radius	ft m	40	50	60	70	80	90	98	110	120	131	140	150	164	170	180	190	197
			12.2	15.2	18.3	21.3	24.4	27.4	30.0	33.5	36.6	40.0	42.7	45.7	50.0	51.8	55.0	57.9	60.0
197 ft 60.0m	44,090 lbs – 47 ft 20 000 kg – 14.3m	lbs kg	44,090 20 000	39,200 17 780	32,000 14 520	27,500 12 470	24,000 10 890	21,000 9 530	19,000 8 620	17,000 7 710	15,100 6 650	13,300 6 030	12,300 5 580	11,100 5 030	10,000 4 540	9,100 4 130	8,500 3 855	7,800 3 540	7,495 3 400
180 ft 55.0m	44,090 lbs – 48 ft 20 000 kg – 14.6m	lbs kg	44,090 20 000	41,000 18 600	33,500 15 200	28,500 12 930	24,300 11 020	21,500 9 750	19,800 8 980	17,200 7 800	15,800 7 170	14,500 6 580	13,000 5 900	11,800 5 350	10,300 4 670	9,800 4 450	9,260 4 200		
164 ft 50.0m	44,090 lbs – 50 ft 20 000 kg – 15.2m	lbs kg	44,090 20 000	44,090 20 000	35,200 15 965	30,000 13,610	26,100 11 840	23,000 10 430	21,100 9 570	18,750 8 500	17,300 7 845	15,760 7 150	14,800 6 715	13,600 6 170	12,350 5 600				
131 ft 40.0m	44,090 lbs – 51 ft 20 000 kg – 15.5m	lbs kg	44,090 20 000	44,090 20 000	36,800 16 690	31,850 14 445	28,600 12 970	25,500 11,565	23,600 10 705	20,750 9 410	19,100 8 665	17,200 7 800							
98 ft 30.0m	44,090 lbs – 53 ft 20 000 kg – 16.2m	lbs kg	44,090 20 000	44,090 20 000	40,000 18 145	35,400 16 055	31,850 14 445	28,950 13 130	26,450 12 000										

Important! 180-ft (55.0m) & 197-ft (60.0m) jib assemblies are NOT available for all Liebherr 300C cranes. Note crane's serial number & contact Morrow for specific information.

Capacity



SPECIFICATIONS

LIEBHERR Tower Crane Model 300 C Series Two

IMPORTANT: This data applies only to cranes with serial numbers #0962 & #1053
Liebherr 300 C Series Two tower cranes are constructed according to C007 design.

Hoist Speed and Capacity

Hoist Unit	WiW 0857-740.000	2-Part Line			
114 hp (85 kW) DC hoist unit Ward Leonard 3-speed gearbox Electromagnetic gear shifting LS 320	Gear	Capacity	Line Speed	Capacity	Line Speed
	1	22,045 lbs @	136 fpm	10 000 kg @	42 m/min
	2	11,025 lbs @	280 fpm	5 000 kg @	85 m/min
	3	5,000 lbs @	560 fpm	2 270 kg @	170 m/min
Hoist Unit	WiW 0857-740.000	4-Part Line			
114 hp (85 kW) DC hoist unit Ward Leonard 3-speed gearbox Electromagnetic gear shifting LS 160	Gear	Capacity	Line Speed	Capacity	Line Speed
	1	44,090 lbs @	68 fpm	20 000 kg @	21 m/min
	2	22,045 lbs @	140 fpm	10 000 kg @	42.5 m/min
	3	10,000 lbs @	280 fpm	4 540 kg @	85 m/min

Note! When using field weakening of the Ward Leonard system, line speeds increase by 30% while capacities decrease by 50%.
This crane may be equipped with a hoist unit other than that specified in the data above. To verify, check the serial number and operations manual of the crane.
Contact Morrow for additional information.

Motor Information

Drive Unit	Horsepower	Kilowatts	Speed	
Swing	3 x 7.4 hp	3 x 5.5 kW	0.8 rpm	
Trolley	8.4 hp	6.3 kW	65 – 130 fpm	20m – 40m /min
Rail travelling	2 x 14.2 hp	2 x 10.6 kW	98 fpm	30m /min

Power Requirements



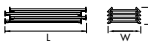
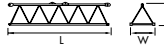

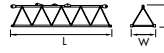
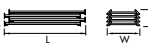
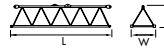
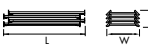
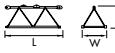

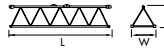
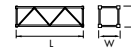
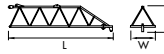
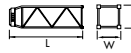
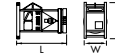
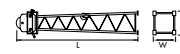
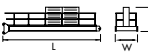
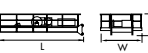

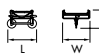
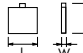
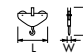
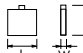
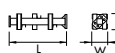
480 Volts — 3-phase — 60-cycle	250 Amperes service with 114 hp (85 kW) DC hoist unit
--------------------------------	---

Specifications subject to change without notice. For other configurations and specifications, contact Morrow Equipment.

Morrow Equipment Co., L.L.C.

Component List

LIEBHERR 300 C Series Two

Description	Dimensions L x W x H	Weight	Description	Dimensions L x W x H	Weight
Outer Tower Section ¹ 350C #323 Reinforced	 27'-6" x 10'-0" x 4'-0" 8.38m x 3.05m x 1.22m	15,700 lbs 7 120 kg	Jib Section ① #611	 34'-0" x 6'-9" x 7'-6" 10.4m x 2.06m x 2.29m	7,400 lbs 3 355 kg
Outer Tower Section ² 350C #321 Normal	 27'-6" x 10'-0" x 4'-0" 8.38m x 3.05m x 1.22m	14,350 lbs 6 510 kg	Jib Section ② #621	 33'-6" x 6'-9" x 7'-0" 10.2m x 2.06m x 2.11m	5,700 lbs 2 585 kg
Transition 350C/300C	 1'-6" x 10'-4" x 10'-4" 0.45m x 3.15m x 3.15m	3,725 lbs 1 690 kg	Jib Section ③ #622	 33'-6" x 6'-9" x 8'-0" 10.2m x 2.06m x 2.44m	6,000 lbs 2 720 kg
Outer Tower Section ³ 300C #321 Reinforced	 21'-10" x 9'-2" x 4'-0" 6.66m x 2.8m x 1.22m	9,700 lbs 4 400 kg	Jib Section ④ #631	 33'-6" x 6'-9" x 7'-0" 10.2m x 2.06m x 2.11m	4,415 lbs 2 000 kg
Outer Tower Section ⁴ 300C #321 Normal	 21'-10" x 9'-2" x 4'-0" 6.66m x 2.8m x 1.22m	9,260 lbs 4 200 kg	Jib Section ⑤ #632-0896	 15'-6" x 6'-9" x 7'-0" 4.73m x 2.06m x 2.11m	2,315 lbs 1 050 kg
Bottom Climbing Unit with Hydraulics	 27'-2" x 7'-6" x 7'-5" 8.28m x 2.29m x 2.26m	15,430 lbs 7 000 kg	Jib Section ⑥ #632	 33'-6" x 6'-9" x 7'-0" 10.2m x 2.06m x 2.11m	3,860 lbs 1 750 kg
Inner Tower Section A-Section #331	 21'-0" x 7'-5" x 7'-5" 6.4m x 2.26m x 2.26m	8,820 lbs 4 000 kg	Jib Section ⑦ #641	 33'-6" x 6'-9" x 8'-6" 10.2m x 2.06m x 2.6m	5,000 lbs 2 265 kg
Inner Tower Section C-Section #333	 23'-8" x 7'-5" x 7'-5" 7.2m x 2.26m x 2.26m	15,430 lbs 7 000 kg	Jib Assembly ⁸ for 197-ft (60.0m) jib	①②③④⑥⑦ 197'-6" x 9'-0" x 10'-3" 60.2m x 2.74m x 3.12m	43,950 lbs 19 935 kg
Slewing Assembly ⁵	 14'-1" x 7'-0" x 10'-3" 4.3m x 2.13m x 3.13m	18,960 lbs 8 600 kg	Jib Assembly ⁸ for 180-ft (55.0m) jib	①②③④⑤⑦ 181'-1" x 9'-0" x 10'-3" 55.2m x 2.74m x 3.12m	42,735 lbs 19 385 kg
Tower Top	 38'-10" x 7'-6" x 7'-6" 11.84m x 2.29m x 2.29m	10,580 lbs 4 800 kg	Jib Assembly ⁸ for 164-ft (50.0m) jib	①②③④⑦ 164'-8" x 9'-0" x 10'-3" 50.2m x 2.74m x 3.12m	39,040 lbs 17,710 kg
Counterjib Section 1 ⁶ (Inner)	 33'-6" x 7'-0" x 7'-2" 10.2m x 2.13m x 2.18m	10,430 lbs 4 730 kg	Jib Assembly ⁸ for 131-ft (40.0m) jib	①③④⑦ 131'-10" x 9'-0" x 10'-3" 40.2m x 2.74m x 3.12m	30,890 lbs 14 010 kg
Counterjib Section 2 ⁷ w/Hoist Unit (Outer)	 33'-0" x 10'-3" x 4'-6" 10.06m x 3.13m x 1.37m	17,650 lbs 8 000 kg	Jib Assembly ⁸ for 98-ft (30.0m) jib	①②③ 99'-0" x 9'-0" x 10'-3" 30.2m x 2.74m x 3.12m	24,890 lbs 11 290 kg
Counterjib ⁸ (Complete)	 62'-6" x 10'-3" x 7'-2" 19.1m x 3.13m x 2.18m	28,080 lbs 12 735 kg	Trolley (2/4-part)	 7'-4" x 9'-0" x 4'-0" 2.24m x 2.74m x 1.22m	1,600 lbs 725 kg
Counterweight (each) Block A	 6'-8" x 0'-5" x 8'-2" 2.64m x 0.13m x 2.49m	3,400 lbs 1 545 kg	Hook Block (2/4-part)	 8'-3" x 1'-6" x 7'-8" 2.52m x 0.45m x 2.34m	1,765 lbs 800 kg
Counterweight (each) Block B	 6'-8" x 0'-7" x 8'-2" 2.64m x 0.17m x 2.49m	4,545 lbs 2 060 kg	Outer Tower Anchor (ea.) 300C (4 per set)	 5'-4" x 1'-2" x 1'-2" 1.62m x 0.36m x 0.36m	340 lbs 155 kg

NOTE: Weights and dimensions are approximate. Scale components before lifting.

- Dimensions shown are for a stack of 4 tower section panels. Four (4) panels are required for each tower section (complete). Dimensions of a completely assembled tower section are 26'-4" x 10'-0" x 10'-0" (8.0m x 3.05m x 3.05m).
- Dimensions shown are for a stack of 4 tower section panels. Four (4) panels are required for each tower section (complete). Dimensions of a completely assembled tower section are 26'-4" x 10'-0" x 10'-0" (8.0m x 3.05m x 3.05m).
- Dimensions shown are for a stack of 4 tower section panels. Four (4) panels are required for each tower section (complete). Dimensions of a completely assembled tower section are 21'-0" x 9'-2" x 9'-2" (6.66m x 2.8m x 2.8m).
- Dimensions shown are for a stack of 4 tower section panels. Four (4) panels are required for each tower section (complete). Dimensions of a completely assembled tower section are 21'-0" x 9'-2" x 9'-2" (6.66m x 2.8m x 2.8m).
- Slewing Assembly includes operator's cabin, three slewing motors and slewing ring.
- Counterjib Section 1 includes counterjib section, handrails and electrical panel.
- Counterjib Section 2 includes counterjib section, handrails and 114 hp (85 kW) DC hoist unit. Does not include hoist wire rope.
- Counterjib (Complete) includes Counterjib Sections 1 (inner) and 2 (outer).
- Jib Assemblies include jib sections, pins, equalizer blocks, lower pendants, jib pendant ropes 1 and 2, 2/4-part trolley and 2/4-part hook block.



Morrow Equipment
C O M P A N Y, L. L. C.

3218 Pringle Road SE • P O Box 3306 • Salem OR 97302 USA • 503/585 5721 • Fax 503/363 1172



Branch Offices: Atlanta, GA • Chicago, IL • Denver, CO • Honolulu, HI • Houston, TX • Los Angeles, CA • Las Vegas, NV
Millwood, NY • San Francisco, CA • Seattle, WA • Miami, FL • Tampa, FL • Washington, DC • Sydney, Australia
Wellington, New Zealand • Vancouver, BC, Canada • Toronto, ON, Canada • Mexico City, Mexico • Monterrey, Mexico